



# U3914 (UI 39/13,5)

18VA - Ta40°C

15VA - Ta70°C



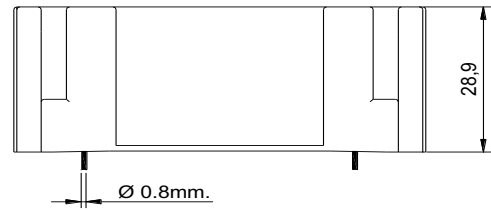
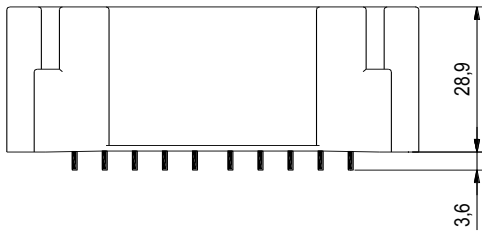
www.efiter.com

weight - 415gr.

## ENCAPSULATED TRANSFORMERS

According EN61558, EN60590, EN60472, UL506, UL1585, UL5085 · External protection

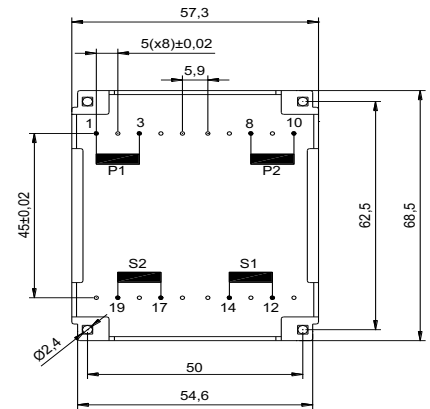
[home>>index](#)



### 18VA. Ia=40B

HR REFERENCE		Vo/Vsec=1,35 Vo → Is=0 Vsec → Isec=In		Prot. Prim. 230V: 100mA/T 115V: 200mA/T
U39140xx	U39145xx	Vsec	Isec	Prot. Sec. mA/F
U3914007	U3914507	2x4,5V	2x2000mA	2x2500mA
U3914000	U3914500	2x6V	2x1500mA	2x2000mA
U3914001	U3914501	2x7,5V	2x1200mA	2x1500mA
U3914002	U3914502	2x9V	2x1000mA	2x1250mA
U3914003	U3914503	2x12V	2x750mA	2x800mA
U3914004	U3914504	2x15V	2x600mA	2x630mA
U3914005	U3914505	2x18V	2x500mA	2x630mA
U3914006	U3914506	2x24V	2x375mA	2x400mA

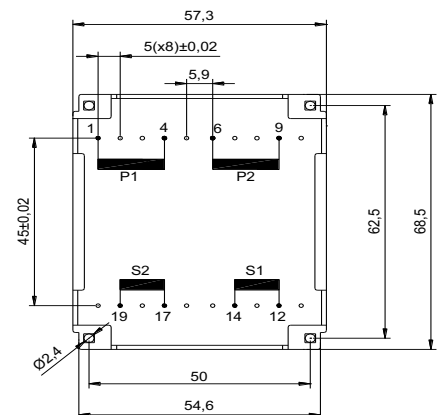
### U39xx0xx



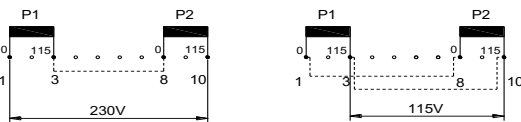
### 15VA. Ta=70B

HR REFERENCE		Vo/Vsec=1,35 Vo → Is=0 Vsec → Isec=In		Prot. Prim. 230V: 100mA/T 115V: 200mA/T
U39140xx	U39145xx	Vsec	Isec	Prot. Sec. mA/F
U3914057	U3914557	2x4,5V	2x1666mA	2x2000mA
U3914050	U3914550	2x6V	2x1250mA	2x1500mA
U3914051	U3914551	2x7,5V	2x1000mA	2x1250mA
U3914052	U3914552	2x9V	2x833mA	2x1000mA
U3914053	U3914553	2x12V	2x625mA	2x800mA
U3914054	U3914554	2x15V	2x500mA	2x630mA
U3914055	U3914555	2x18V	2x416mA	2x500mA
U3914056	U3914556	2x24V	2x312mA	2x400mA

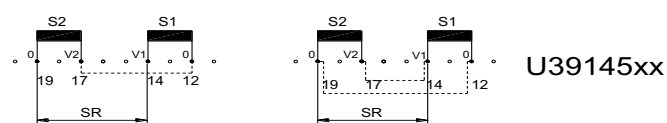
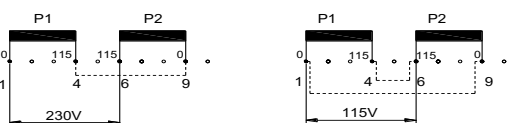
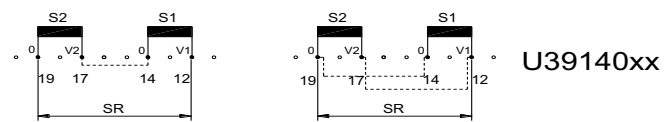
### U39xx5xx



#### Primary connections



#### Secondary connections



$V_{sr}=V1+V2$   
 $I_{sr}=I1$

$V_{sr}=V1$   
 $I_{sr}=I1+I2$

According EN61558, EN60590, EN60472, UL506, UL1585, UL5085 .