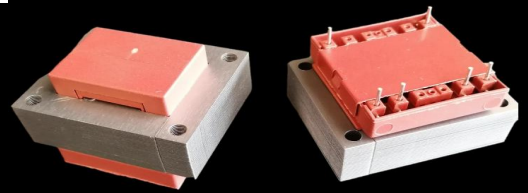




S9660 (EI 96)

170VA - Ta70°C

Dim:80x96x99,6mm

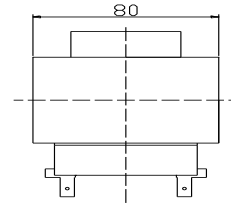
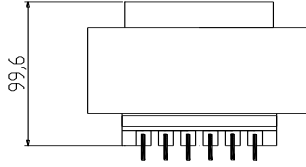
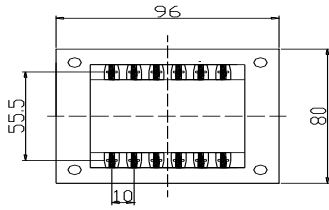


OPEN FRAME TRANSFORMERS

According EN61558, EN60590, EN60472, UL506, UL1585, UL5085 · External protection

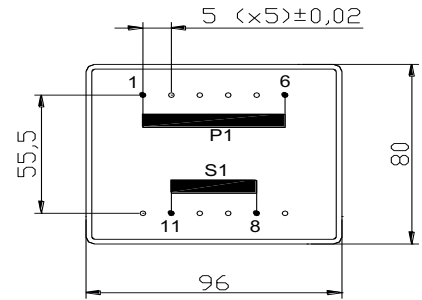
www.efiter.com

[home>>index](#)



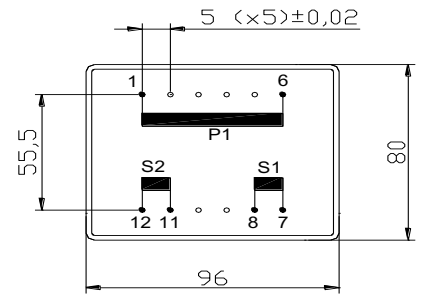
SINGLE SECONDARY, 170VA. Ta70°C

HR REFERENCE		Vo/Vsec=1,3 Vo → Is=0 Vsec → Isec=In		Prot. Prim. 230V: 50mA/T 115V: 100mA/T
Prim. 230V	Prim. 115V	Vsec	Isec	Prot. Sec. mA/F
S9660064	S9660164	4,5V	37778mA	38000mA
S9660050	S9660150	6V	28333mA	30000mA
S9660052	S9660152	7,5V	22667mA	25000mA
S9660054	S9660154	9V	1889mA	20000mA
S9660056	S9660156	12V	14167mA	15000mA
S9660058	S9660158	15V	11333mA	12000mA
S9660060	S9660160	18V	9444mA	10000mA
S9660070	S9660170	20V	8500mA	9000mA
S9660062	S9660172	24V	7083mA	8000mA



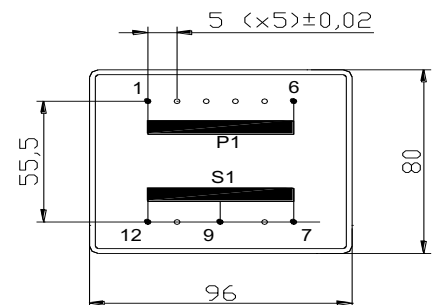
DUAL SECONDARY, 170VA. Ta70°C

HR REFERENCE		Vo/Vsec=1,3 Vo → Is=0 Vsec → Isec=In		Prot. Prim. 230V: 50mA/T 115V: 100mA/T
Prim. 230V	Prim. 115V	Vsec	Isec	Prot. Sec. mA/F
S9660065	S9660165	2x4,5V	2x18889mA	2x20000mA
S9660051	S9660151	2x6V	2x14167mA	2x15000mA
S9660053	S9660153	2x7,5V	2x11333mA	2x12000mA
S9660055	S9660155	2x9V	2x9444mA	2x10000mA
S9660057	S9660157	2x12V	2x7083mA	2x8000mA
S9660059	S9660159	2x15V	2x5667mA	2x6000mA
S9660061	S9660161	2x18V	2x4722mA	2x5000mA
S9660069	S9660169	2x20V	2x4250mA	2x5000mA
S9660063	S9660163	2x24V	2x3542mA	2x4000mA



CENTER TAPPED, 170VA. Ta70°C

HR REFERENCE		Vo/Vsec=1,3 Vo → Is=0 Vsec → Isec=In		Prot. Prim. 230V: 50mA/T 115V: 100mA/T
Prim. 230V	Prim. 115V	Vsec	Isec	Prot. Sec. mA/F
S9660085	S9660185	2x4,5V	2x18889mA	2x20000mA
S9660071	S9660171	2x6V	2x14167mA	2x15000mA
S9660073	S9660173	2x7,5V	2x11333mA	2x12000mA
S9660075	S9660175	2x9V	2x9444mA	2x10000mA
S9660077	S9660177	2x12V	2x7083mA	2x8000mA
S9660079	S9660179	2x15V	2x5667mA	2x6000mA
S9660081	S9660181	2x18V	2x4722mA	2x5000mA
S9660089	S9660189	2x20V	2x4250mA	2x5000mA
S9660083	S9660183	2x24V	2x3542mA	2x4000mA



According EN61558, EN60590, EN60472, UL506, UL1585, UL5085