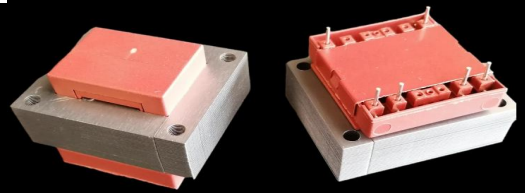




S9650 (EI 96)

160VA - Ta70°C

Dim:80x96x89,6mm

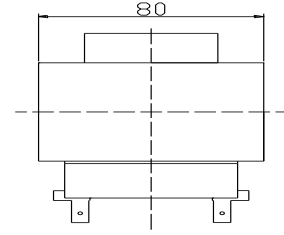
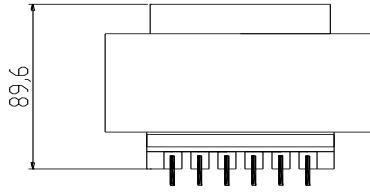
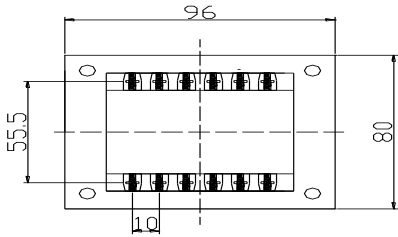


OPEN FRAME TRANSFORMERS

www.efiter.com

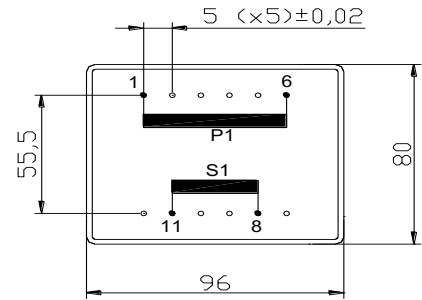
[home>>index](#)

According EN61558, EN60590, EN60472, UL506, UL1585, UL5085 · External protection



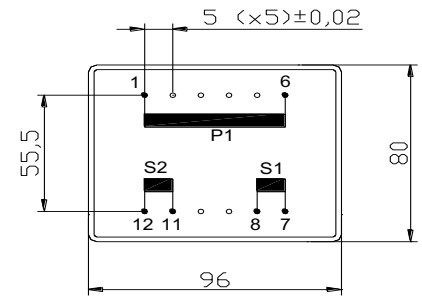
SINGLE SECONDARY, 160VA. Ta70°C

HR REFERENCE		Vo/Vsec=1,3 Vo → Is=0 Vsec → Isec=In		Prot. Prim. 230V: 50mA/T 115V: 100mA/T
Prim. 230V	Prim. 115V	Vsec	Isec	Prot. Sec. mA/F
S9650064	S9650164	4,5V	35556mA	36000mA
S9650050	S9650150	6V	26667mA	27000mA
S9650052	S9650152	7,5V	21333mA	22000mA
S9650054	S9650154	9V	17778mA	18000mA
S9650056	S9650156	12V	13333mA	14000mA
S9650058	S9650158	15V	10667mA	11000mA
S9650060	S9650160	18V	8889mA	9000mA
S9650070	S9650170	20V	8000mA	9000mA
S9650062	S9650172	24V	6667mA	7000mA



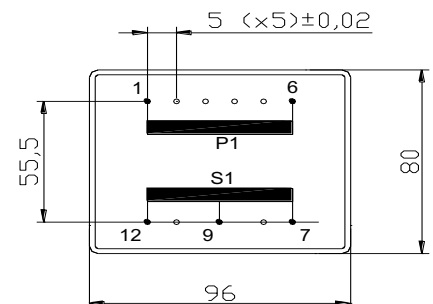
DUAL SECONDARY, 160VA. Ta70°C

HR REFERENCE		Vo/Vsec=1,3 Vo → Is=0 Vsec → Isec=In		Prot. Prim. 230V: 50mA/T 115V: 100mA/T
Prim. 230V	Prim. 115V	Vsec	Isec	Prot. Sec. mA/F
S9650065	S9650165	2x4,5V	2x17778mA	2x18000mA
S9650051	S9650151	2x6V	2x13333mA	2x14000mA
S9650053	S9650153	2x7,5V	2x10667mA	2x11000mA
S9650055	S9650155	2x9V	2x8889mA	2x9000mA
S9650057	S9650157	2x12V	2x6667mA	2x7000mA
S9650059	S9650159	2x15V	2x5333mA	2x6000mA
S9650061	S9650161	2x18V	2x4444mA	2x5000mA
S9650069	S9650169	2x20V	2x4000mA	2x5000mA
S9650063	S9650163	2x24V	2x3333mA	2x4000mA



CENTER TAPPED, 160VA. Ta70°C

HR REFERENCE		Vo/Vsec=1,3 Vo → Is=0 Vsec → Isec=In		Prot. Prim. 230V: 50mA/T 115V: 100mA/T
Prim. 230V	Prim. 115V	Vsec	Isec	Prot. Sec. mA/F
S9650085	S9650185	2x4,5V	2x17778mA	2x18000mA
S9650071	S9650171	2x6V	2x13333mA	2x14000mA
S9650073	S9650173	2x7,5V	2x10667mA	2x11000mA
S9650075	S9650175	2x9V	2x8889mA	2x9000mA
S9650077	S9650177	2x12V	2x6667mA	2x7000mA
S9650079	S9650179	2x15V	2x5333mA	2x6000mA
S9650081	S9650181	2x18V	2x4444mA	2x5000mA
S9650089	S9650189	2x20V	2x4000mA	2x5000mA
S9650083	S9650183	2x24V	2x3333mA	2x4000mA



According EN61558, EN60590, EN60472, UL506, UL1585, UL5085