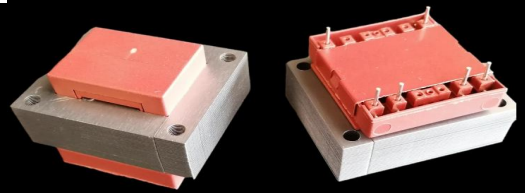




S8450 (EI 84)

130VA - Ta70°C

Dim:70x84x81mm

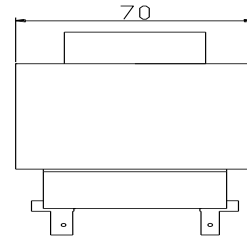
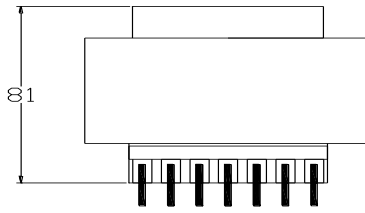
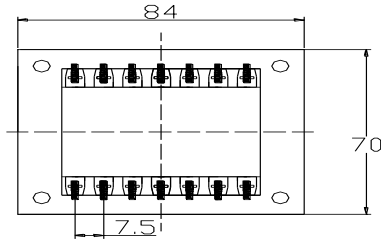


OPEN FRAME TRANSFORMERS

According EN61558, EN60590, EN60472, UL506, UL1585, UL5085 · External protection

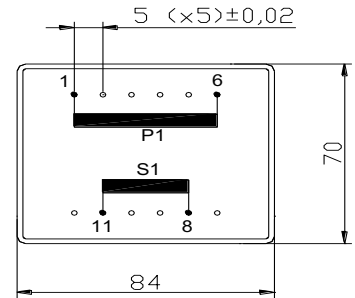
www.efiter.com

[home>>index](#)



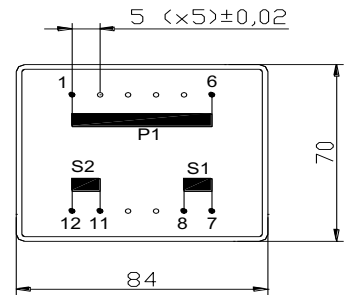
SINGLE SECONDARY, 130VA. Ta70°C

HR REFERENCE		Vo/Vsec=1,3 Vo → Is=0 Vsec → Isec=In		Prot. Prim. 230V: 50mA/T 115V: 100mA/T
Prim. 230V	Prim. 115V	Vsec	Isec	Prot. Sec. mA/F
S8450064	S8450164	4,5V	28889mA	29000mA
S8450050	S8450150	6V	21667mA	22000mA
S8450052	S8450152	7,5V	17333mA	18000mA
S8450054	S8450154	9V	14444mA	15000mA
S8450056	S8450156	12V	10833mA	11000mA
S8450058	S8450158	15V	8667mA	9000mA
S8450060	S8450160	18V	7222mA	8000mA
S8450070	S8450170	20V	6500mA	7000mA
S8450062	S8450172	24V	5417mA	6000mA



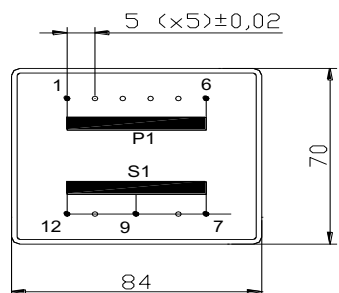
DUAL SECONDARY, 130VA. Ta70°C

HR REFERENCE		Vo/Vsec=1,3 Vo → Is=0 Vsec → Isec=In		Prot. Prim. 230V: 50mA/T 115V: 100mA/T
Prim. 230V	Prim. 115V	Vsec	Isec	Prot. Sec. mA/F
S8450065	S8450165	2x4,5V	2x14444mA	2x15000mA
S8450051	S8450151	2x6V	2x10833mA	2x11000mA
S8450053	S8450153	2x7,5V	2x8667mA	2x10000mA
S8450055	S8450155	2x9V	2x7222mA	2x8000mA
S8450057	S8450157	2x12V	2x5417mA	2x6000mA
S8450059	S8450159	2x15V	2x4333mA	2x5000mA
S8450061	S8450161	2x18V	2x3611mA	2x4000mA
S8450069	S8450169	2x20V	2x3250mA	2x4000mA
S8450063	S8450163	2x24V	2x2708mA	2x3000mA



CENTER TAPPED, 130VA. Ta70°C

HR REFERENCE		Vo/Vsec=1,3 Vo → Is=0 Vsec → Isec=In		Prot. Prim. 230V: 50mA/T 115V: 100mA/T
Prim. 230V	Prim. 115V	Vsec	Isec	Prot. Sec. mA/F
S8450085	S8450185	2x4,5V	2x14444mA	2x15000mA
S8450071	S8450171	2x6V	2x10833mA	2x11000mA
S8450073	S8450173	2x7,5V	2x8667mA	2x10000mA
S8450075	S8450175	2x9V	2x7222mA	2x8000mA
S8450077	S8450177	2x12V	2x5417mA	2x6000mA
S8450079	S8450179	2x15V	2x4333mA	2x5000mA
S8450081	S8450181	2x18V	2x3611mA	2x4000mA
S8450089	S8450189	2x20V	2x3250mA	2x4000mA
S8450083	S8450183	2x24V	2x2708mA	2x3000mA



According EN61558, EN60590, EN60472, UL506, UL1585, UL5085