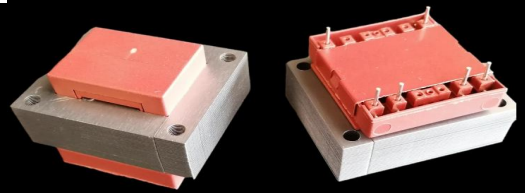




S8444 (EI 84)

120VA - Ta40°C

Dim:70x84x74,2mm

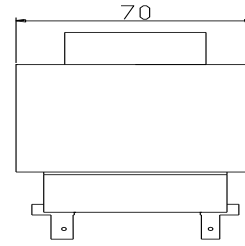
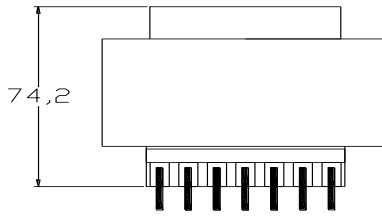
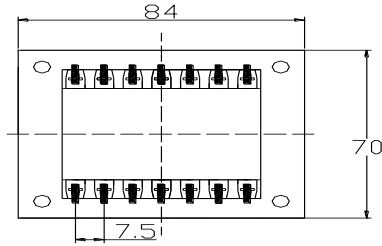


OPEN FRAME TRANSFORMERS

www.efiter.com

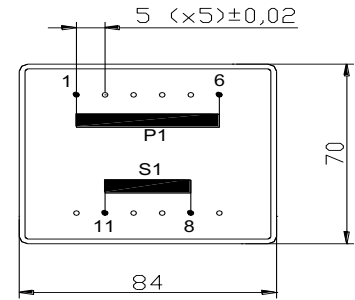
home>>index

According EN61558, EN60590, EN60472, UL506, UL1585, UL5085 - External protection



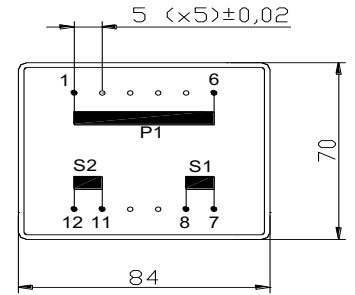
SINGLE SECONDARY, 120VA. Ta40°C

HR REFERENCE		Vo/Vsec=1,3 Vo → Is=0 Vsec → Isec=In		Prot. Prim. 230V: 50mA/T 115V: 100mA/T
Prim. 230V	Prim. 115V	Vsec	Isec	Prot. Sec. mA/F
S8444014	S8444114	4,5V	26667mA	27000mA
S8444000	S8444100	6V	20000mA	21000mA
S8444002	S8444102	7,5V	16000mA	17000mA
S8444004	S8444104	9V	13333mA	15000mA
S8444006	S8444106	12V	10000mA	11000mA
S8444008	S8444108	15V	8000mA	9000mA
S8444010	S8444110	18V	6667mA	7000mA
S8444020	S8444120	20V	6000mA	7000mA
S8444012	S8444112	24V	5000mA	6000mA



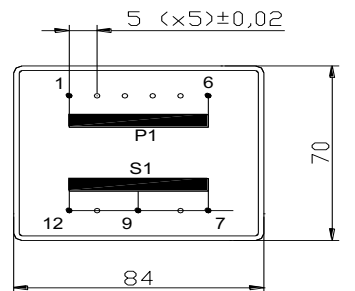
DUAL SECONDARY, 120VA. Ta40°C

HR REFERENCE		Vo/Vsec=1,3 Vo → Is=0 Vsec → Isec=In		Prot. Prim. 230V: 50mA/T 115V: 100mA/T
Prim. 230V	Prim. 115V	Vsec	Isec	Prot. Sec. mA/F
S8444015	S8444115	2x4,5V	2x13333mA	2x14000mA
S8444001	S8444101	2x6V	2x10000mA	2x11000mA
S8444003	S8444103	2x7,5V	2x8000mA	2x10000mA
S8444005	S8444105	2x9V	2x6667mA	2x7000mA
S8444007	S8444107	2x12V	2x5000mA	2x6000mA
S8444009	S8444109	2x15V	2x4000mA	2x5000mA
S8444011	S8444111	2x18V	2x3333mA	2x4000mA
S8444019	S8444119	2x20V	2x3000mA	2x4000mA
S8444013	S8444113	2x24V	2x2500mA	2x3000mA



CENTER TAPPED, 120VA. Ta40°C

HR REFERENCE		Vo/Vsec=1,3 Vo → Is=0 Vsec → Isec=In		Prot. Prim. 230V: 50mA/T 115V: 100mA/T
Prim. 230V	Prim. 115V	Vsec	Isec	Prot. Sec. mA/F
S8444035	S8444135	2x4,5V	2x13333mA	2x14000mA
S8444021	S8444121	2x6V	2x10000mA	2x11000mA
S8444023	S8444123	2x7,5V	2x8000mA	2x10000mA
S8444025	S8444125	2x9V	2x6667mA	2x7000mA
S8444027	S8444127	2x12V	2x5000mA	2x6000mA
S8444029	S8444129	2x15V	2x3333mA	2x5000mA
S8444031	S8444131	2x18V	2x3333mA	2x4000mA
S8444039	S8444139	2x20V	2x3000mA	2x4000mA
S8444033	S8444133	2x24V	2x2500mA	2x3000mA



According EN61558, EN60590, EN60472, UL506, UL1585, UL5085