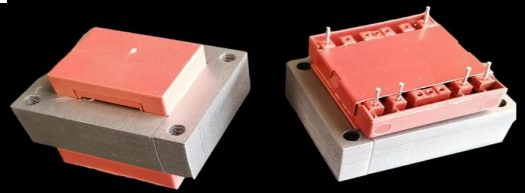




S8444 (EI 84)

100VA - Ta70°C

Dim:70x84x74,2mm

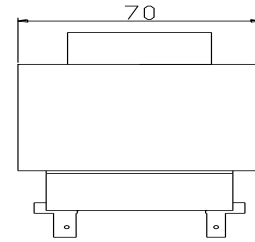
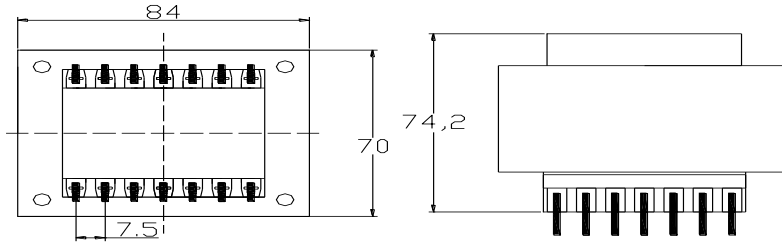


OPEN FRAME TRANSFORMERS

www.efiter.com

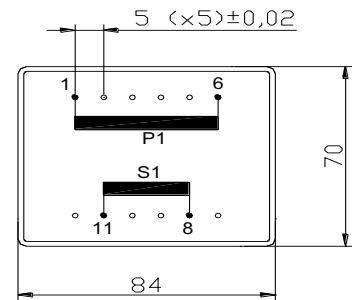
[home>>index](#)

According EN61558, EN60590, EN60472, UL506, UL1585, UL5085 · External protection



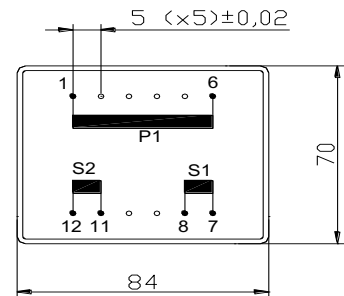
SINGLE SECONDARY, 100VA. Ta70°C

HR REFERENCE		Vo/Vsec=1,3 Vo → Is=0 Vsec → Isec=In		Prot. Prim. 230V: 50mA/T 115V: 100mA/T
Prim. 230V	Prim. 115V	Vsec	Isec	Prot. Sec. mA/F
S8444064	S8444164	4,5V	22222mA	23000mA
S8444050	S8444150	6V	16667mA	17000mA
S8444052	S8444152	7,5V	13333mA	15000mA
S8444054	S8444154	9V	11111mA	12000mA
S8444056	S8444156	12V	8333mA	10000mA
S8444058	S8444158	15V	6667mA	7000mA
S8444060	S8444160	18V	5556mA	200mA
S8444070	S8444170	20V	5000mA	200mA
S8444062	S8444172	24V	4167mA	160mA



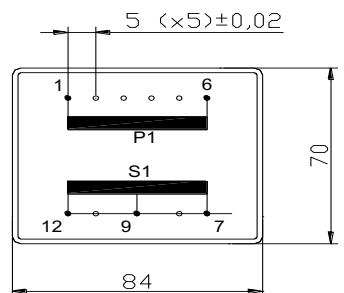
DUAL SECONDARY, 100VA. Ta70°C

HR REFERENCE		Vo/Vsec=1,3 Vo → Is=0 Vsec → Isec=In		Prot. Prim. 230V: 50mA/T 115V: 100mA/T
Prim. 230V	Prim. 115V	Vsec	Isec	Prot. Sec. mA/F
S8444065	S8444165	2x4,5V	2x11111mA	2x12000mA
S8444051	S8444151	2x6V	2x8333mA	2x9000mA
S8444053	S8444153	2x7,5V	2x6667mA	2x7000mA
S8444055	S8444155	2x9V	2x5556mA	2x6000mA
S8444057	S8444157	2x12V	2x4167mA	2x5000mA
S8444059	S8444159	2x15V	2x3333mA	2x4000mA
S8444061	S8444161	2x18V	2x2778mA	2x3000mA
S8444069	S8444169	2x20V	2x2500mA	2x3000mA
S8444063	S8444163	2x24V	2x2083mA	2x2100mA



CENTER TAPPED, 100VA. Ta70°C

HR REFERENCE		Vo/Vsec=1,3 Vo → Is=0 Vsec → Isec=In		Prot. Prim. 230V: 50mA/T 115V: 100mA/T
Prim. 230V	Prim. 115V	Vsec	Isec	Prot. Sec. mA/F
S8444085	S8444185	2x4,5V	2x11111mA	2x12000mA
S8444071	S8444171	2x6V	2x8333mA	2x9000mA
S8444073	S8444173	2x7,5V	2x6667mA	2x7000mA
S8444075	S8444175	2x9V	2x5556mA	2x6000mA
S8444077	S8444177	2x12V	2x4167mA	2x5000mA
S8444079	S8444179	2x15V	2x3333mA	2x4000mA
S8444081	S8444181	2x18V	2x2778mA	2x3000mA
S8444089	S8444189	2x20V	2x2500mA	2x3000mA
S8444083	S8444183	2x24V	2x2083mA	2x2100mA



According EN61558, EN60590, EN60472, UL506, UL1585, UL5085