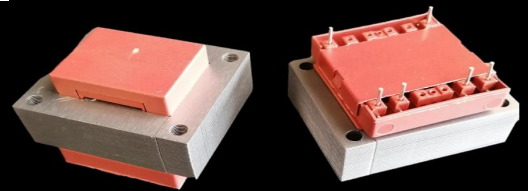




S7540 (EI 75)

120VA - Ta40°C

Dim:62x75x69,4mm

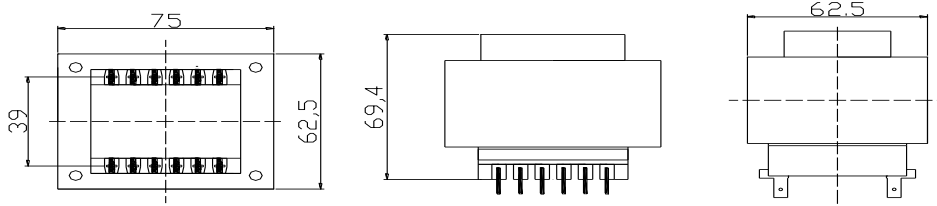


OPEN FRAME TRANSFORMERS

www.efiter.com

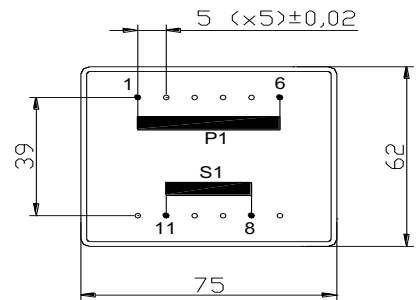
[home>>index](#)

According EN61558, EN60590, EN60472, UL506, UL1585, UL5085 · External protection



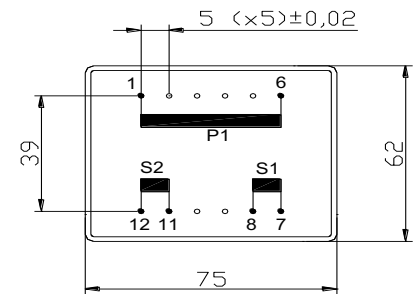
SINGLE SECONDARY, 120VA. Ta40°C

HR REFERENCE		Vo/Vsec=1,3 Vo → Is=0 Vsec → Isec=In		Prot. Prim. 230V: 50mA/T 115V: 100mA/T
Prim. 230V	Prim. 115V	Vsec	Isec	Prot. Sec. mA/F
S7540014	S7540114	4,5V	26667mA	27000mA
S7540000	S7540100	6V	20000mA	20125mA
S7540002	S7540102	7,5V	16000mA	17000mA
S7540004	S7540104	9V	13333mA	15000mA
S7540006	S7540106	12V	10000mA	11000mA
S7540008	S7540108	15V	8000mA	9000mA
S7540010	S7540110	18V	6667mA	7000mA
S7540020	S7540120	20V	6000mA	7000mA
S7540012	S7540112	24V	5000mA	6000mA



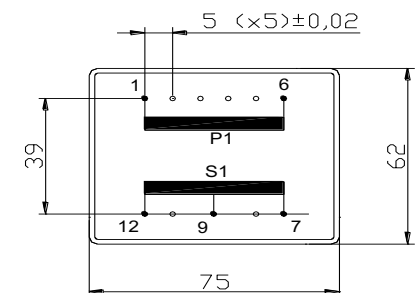
DUAL SECONDARY, 120VA. Ta40°C

HR REFERENCE		Vo/Vsec=1,3 Vo → Is=0 Vsec → Isec=In		Prot. Prim. 230V: 50mA/T 115V: 100mA/T
Prim. 230V	Prim. 115V	Vsec	Isec	Prot. Sec. mA/F
S7540015	S7540115	2x4,5V	2x13333mA	2x14000mA
S7540001	S7540101	2x6V	2x10000mA	2x11000mA
S7540003	S7540103	2x7,5V	2x8000mA	2x10000mA
S7540005	S7540105	2x9V	2x6667mA	2x7000mA
S7540007	S7540107	2x12V	2x5000mA	2x6000mA
S7540009	S7540109	2x15V	2x4000mA	2x5000mA
S7540011	S7540111	2x18V	2x3333mA	2x4000mA
S7540019	S7540119	2x20V	2x3000mA	2x3500mA
S7540013	S7540113	2x24V	2x2500mA	2x3000mA



CENTER TAPPED, 120VA. Ta40°C

HR REFERENCE		Vo/Vsec=1,3 Vo → Is=0 Vsec → Isec=In		Prot. Prim. 230V: 50mA/T 115V: 100mA/T
Prim. 230V	Prim. 115V	Vsec	Isec	Prot. Sec. mA/F
S7540035	S7540135	2x4,5V	2x13333mA	2x14000mA
S7540021	S7540121	2x6V	2x10000mA	2x11000mA
S7540023	S7540123	2x7,5V	2x8000mA	2x10000mA
S7540025	S7540125	2x9V	2x6667mA	2x7000mA
S7540027	S7540127	2x12V	2x5000mA	2x6000mA
S7540029	S7540129	2x15V	2x4000mA	2x5000mA
S7540031	S7540131	2x18V	2x3333mA	2x4000mA
S7540039	S7540139	2x20V	2x3000mA	2x3500mA
S7540033	S7540133	2x24V	2x2500mA	2x3000mA



According EN61558, EN60590, EN60472, UL506, UL1585, UL5085