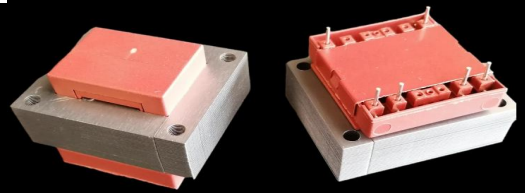




S7540 (EI 75)

100VA - Ta70°B

Dim:62x75x69,4mm

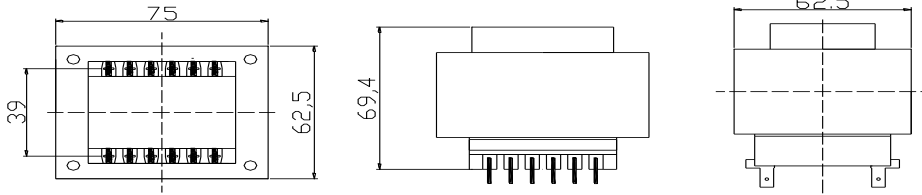


OPEN FRAME TRANSFORMERS

According EN61558, EN60590, EN60472, UL506, UL1585, UL5085 · External protection

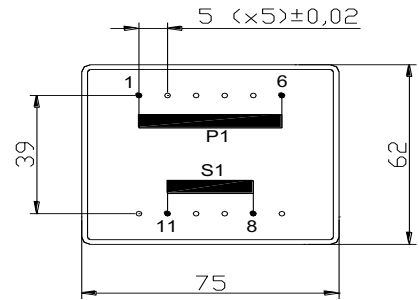
www.efiter.com

[home>>index](#)



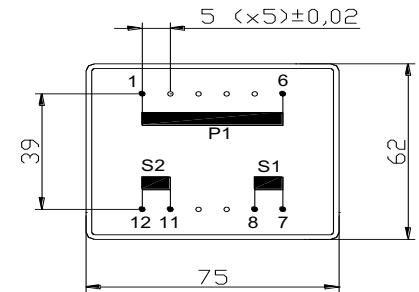
SINGLE SECONDARY, 100VA. Ta70°B

HR REFERENCE		Vo/Vsec=1,3 Vo → Is=0 Vsec → Isec=In		Prot. Prim. 230V: 50mA/T 115V: 100mA/T
Prim. 230V	Prim. 115V	Vsec	Isec	Prot. Sec. mA/F
S7540064	S7540164	4,5V	22222mA	23000mA
S7540050	S7540150	6V	16667mA	17000mA
S7540052	S7540152	7,5V	13333mA	15000mA
S7540054	S7540154	9V	11111mA	12000mA
S7540056	S7540156	12V	8333mA	9000mA
S7540058	S7540158	15V	6667mA	7000mA
S7540060	S7540160	18V	5556mA	6000mA
S7540070	S7540170	20V	5000mA	6000mA
S7540062	S7540172	24V	4167mA	5000mA



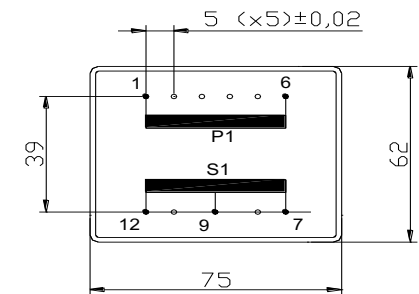
DUAL SECONDARY, 100VA. Ta70°B

HR REFERENCE		Vo/Vsec=1,3 Vo → Is=0 Vsec → Isec=In		Prot. Prim. 230V: 50mA/T 115V: 100mA/T
Prim. 230V	Prim. 115V	Vsec	Isec	Prot. Sec. mA/F
S7540065	S7540165	2x4,5V	2x11111mA	2x12000mA
S7540051	S7540151	2x6V	2x8333mA	2x9000mA
S7540053	S7540153	2x7,5V	2x6667mA	2x7000mA
S7540055	S7540155	2x9V	2x5556mA	2x6000mA
S7540057	S7540157	2x12V	2x4167mA	2x5000mA
S7540059	S7540159	2x15V	2x3333mA	2x4000mA
S7540061	S7540161	2x18V	2x2778mA	2x3000mA
S7540069	S7540169	2x20V	2x2500mA	2x3000mA
S7540063	S7540163	2x24V	2x2083mA	2x2000mA



CENTER TAPPED, 100VA. Ta70°B

HR REFERENCE		Vo/Vsec=1,3 Vo → Is=0 Vsec → Isec=In		Prot. Prim. 230V: 50mA/T 115V: 100mA/T
Prim. 230V	Prim. 115V	Vsec	Isec	Prot. Sec. mA/F
S7525085	S7540185	2x4,5V	2x11111mA	2x12000mA
S7540071	S7540171	2x6V	2x8333mA	2x9000mA
S7540073	S7540173	2x7,5V	2x6667mA	2x7000mA
S7540075	S7540175	2x9V	2x5556mA	2x6000mA
S7540077	S7540177	2x12V	2x4167mA	2x5000mA
S7540079	S7540179	2x15V	2x3333mA	2x4000mA
S7540081	S7540181	2x18V	2x2778mA	2x3000mA
S7540089	S7540189	2x20V	2x2500mA	2x3000mA
S7540083	S7540183	2x24V	2x2083mA	2x2000mA



According EN61558, EN60590, EN60472, UL506, UL1585, UL5085