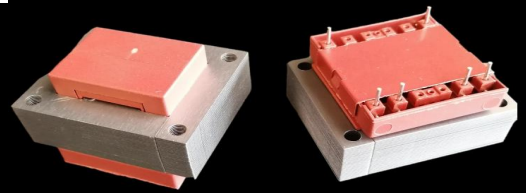




S7535 (EI 75)

85VA - Ta70°B

Dim:62x75x64,5mm

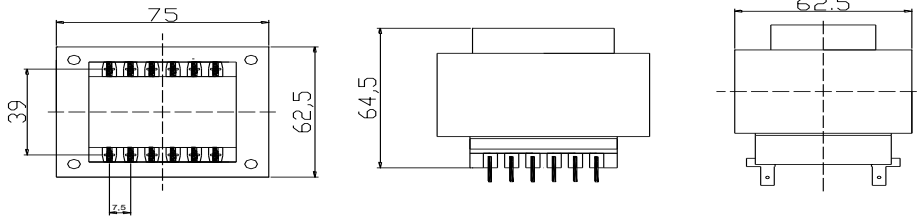


OPEN FRAME TRANSFORMERS

www.efiter.com

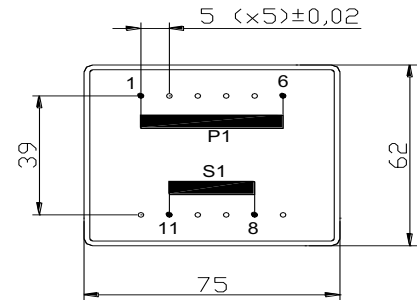
[home>>index](#)

According EN61558, EN60590, EN60472, UL506, UL1585, UL5085 · External protection



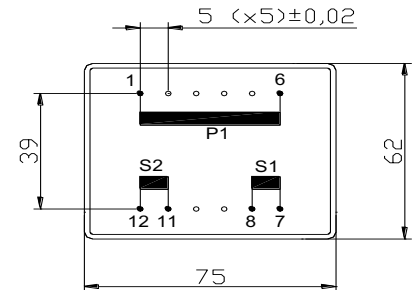
SINGLE SECONDARY, 85VA. Ta°70B

HR REFERENCE		Vo/Vsec=1,3 Vo → Is=0 Vsec → Isec=In		Prot. Prim. 230V: 50mA/T 115V: 100mA/T
Prim. 230V	Prim. 115V	Vsec	Isec	Prot. Sec. mA/F
S7535064	S7535164	4,5V	18889mA	19000mA
S7535050	S7535150	6V	14167mA	15000mA
S7535052	S7535152	7,5V	11333mA	12000mA
S7535054	S7535154	9V	9444mA	10000mA
S7535056	S7535156	12V	7083mA	8000mA
S7535058	S7535158	15V	5667mA	6000mA
S7535060	S7535160	18V	4722mA	5000mA
S7535070	S7535170	20V	4250mA	5000mA
S7535062	S7535172	24V	3542mA	4000mA



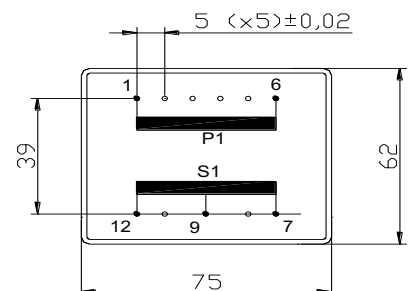
DUAL SECONDARY, 85VA. Ta°70B

HR REFERENCE		Vo/Vsec=1,3 Vo → Is=0 Vsec → Isec=In		Prot. Prim. 230V: 50mA/T 115V: 100mA/T
Prim. 230V	Prim. 115V	Vsec	Isec	Prot. Sec. mA/F
S7535065	S7535165	2x4,5V	2x9444mA	2x10000mA
S7535051	S7535151	2x6V	2x7083mA	2x8000mA
S7535053	S7535153	2x7,5V	2x5667mA	2x6000mA
S7535055	S7535155	2x9V	2x4722mA	2x5000mA
S7535057	S7535157	2x12V	2x3542mA	2x4000mA
S7535059	S7535159	2x15V	2x2833mA	2x3000mA
S7535061	S7535161	2x18V	2x2361mA	2x3000mA
S7535069	S7535169	2x20V	2x2125mA	2x2500mA
S7535063	S7535163	2x24V	2x1771mA	2x2000mA



CENTER TAPPED, 85VA. Ta°70B

HR REFERENCE		Vo/Vsec=1,3 Vo → Is=0 Vsec → Isec=In		Prot. Prim. 230V: 50mA/T 115V: 100mA/T
Prim. 230V	Prim. 115V	Vsec	Isec	Prot. Sec. mA/F
S7525085	S7535185	2x4,5V	2x9444mA	2x10000mA
S7535071	S7535171	2x6V	2x7083mA	2x8000mA
S7535073	S7535173	2x7,5V	2x5667mA	2x6000mA
S7535075	S7535175	2x9V	2x4722mA	2x5000mA
S7535077	S7535177	2x12V	2x3542mA	2x4000mA
S7535079	S7535179	2x15V	2x2833mA	2x3000mA
S7535081	S7535181	2x18V	2x2361mA	2x3000mA
S7535089	S7535189	2x20V	2x2125mA	2x2500mA
S7535083	S7535183	2x24V	2x1771mA	2x2000mA



According EN61558, EN60590, EN60472, UL506, UL1585, UL5085