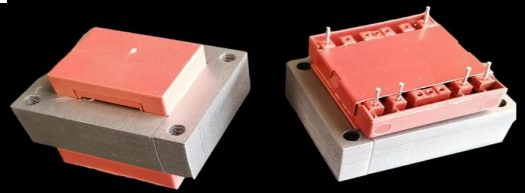




S7535 (EI 75)

100VA - Ta40°C

Dim:62x75x64,5mm

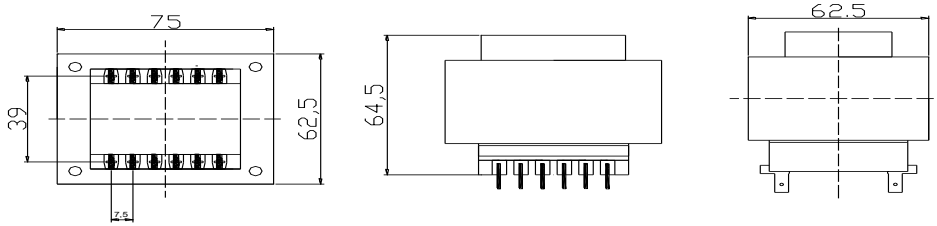


OPEN FRAME TRANSFORMERS

According EN61558, EN60590, EN60472, UL506, UL1585, UL5085 · External protection

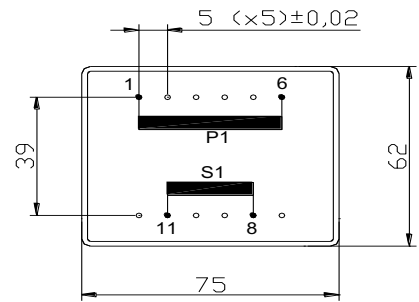
www.efiter.com

[home>>index](#)



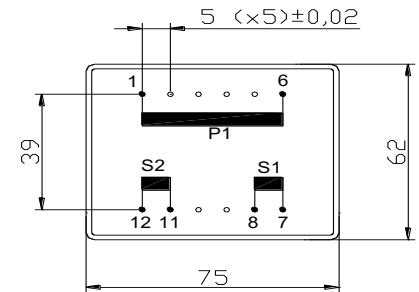
SINGLE SECONDARY, 100VA. Ta40°C

HR REFERENCE		Vo/Vsec=1,3 Vo → Is=0 Vsec → Isec=In		Prot. Prim. 230V: 50mA/T 115V: 100mA/T
Prim. 230V	Prim. 115V	Vsec	Isec	Prot. Sec. mA/F
S7535014	S7535114	4,5V	22222mA	25000mA
S7535000	S7535100	6V	16667mA	17000mA
S7535002	S7535102	7,5V	13333mA	15000mA
S7535004	S7535104	9V	11111mA	12000mA
S7535006	S7535106	12V	8333mA	10000mA
S7535008	S7535108	15V	6667mA	7000mA
S7535010	S7535110	18V	5556mA	6000mA
S7535020	S7535120	20V	5000mA	5500mA
S7535012	S7535112	24V	4167mA	5000mA



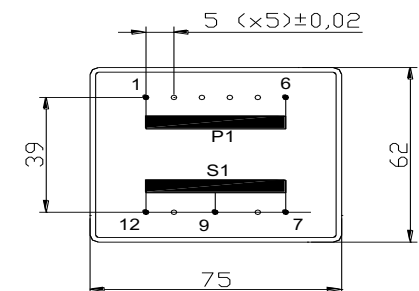
DUAL SECONDARY, 100VA. Ta40°C

HR REFERENCE		Vo/Vsec=1,3 Vo → Is=0 Vsec → Isec=In		Prot. Prim. 230V: 50mA/T 115V: 100mA/T
Prim. 230V	Prim. 115V	Vsec	Isec	Prot. Sec. mA/F
S7535015	S7535115	2x4,5V	2x11111mA	2x12000mA
S7535001	S7535101	2x6V	2x8333mA	2x9000mA
S7535003	S7535103	2x7,5V	2x6667mA	2x7500mA
S7535005	S7535105	2x9V	2x5556mA	2x6000mA
S7535007	S7535107	2x12V	2x4167mA	2x5000mA
S7535009	S7535109	2x15V	2x3333mA	2x3500mA
S7535011	S7535111	2x18V	2x2778mA	2x3000mA
S7535019	S7535119	2x20V	2x2500mA	2x2700mA
S7535013	S7535113	2x24V	2x2083mA	2x2100mA



CENTER TAPPED, 100VA. Ta40°C

HR REFERENCE		Vo/Vsec=1,3 Vo → Is=0 Vsec → Isec=In		Prot. Prim. 230V: 50mA/T 115V: 100mA/T
Prim. 230V	Prim. 115V	Vsec	Isec	Prot. Sec. mA/F
S7535035	S7535135	2x4,5V	2x11111mA	2x12000mA
S7535021	S7535121	2x6V	2x8333mA	2x9000mA
S7535023	S7535123	2x7,5V	2x6667mA	2x7500mA
S7535025	S7535125	2x9V	2x5556mA	2x6000mA
S7535027	S7535127	2x12V	2x4167mA	2x5000mA
S7535029	S7535129	2x15V	2x3333mA	2x3500mA
S7535031	S7535131	2x18V	2x2778mA	2x3000mA
S7535039	S7535139	2x20V	2x2500mA	2x2700mA
S7535033	S7535133	2x24V	2x2083mA	2x2100mA



According EN61558, EN60590, EN60472, UL506, UL1585, UL5085