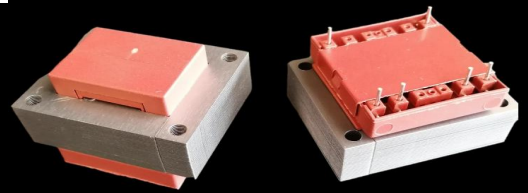




# S6631 (EI 66)

70VA - Ta40°C

Dim:55x66x54,3mm

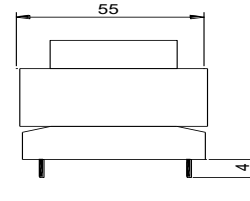
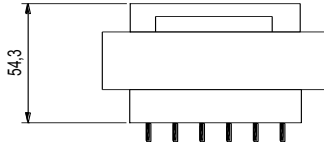
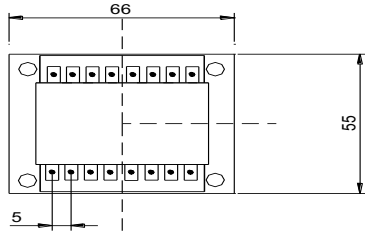


## OPEN FRAME TRANSFORMERS

[www.efiter.com](http://www.efiter.com)

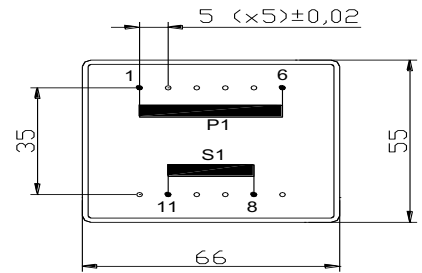
[home>>index](#)

According EN61558, EN60590, EN60472, UL506, UL1585, UL5085 · External protection



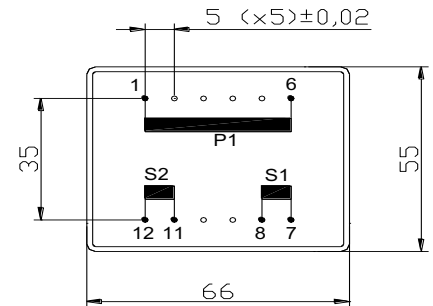
### SINGLE SECONDARY, 70VA. Ta40°C

HR REFERENCE		Vo/Vsec=1,3 Vo → Is=0 Vsec → Isec=In		Prot. Prim. 230V: 50mA/T 115V: 100mA/T
Prim. 230V	Prim. 115V	Vsec	Isec	Prot. Sec. mA/F
S6631014	S6631114	4,5V	15556mA	16000mA
S6631000	S6631100	6V	11667mA	12000mA
S6631002	S6631102	7,5V	93333mA	10000mA
S6631004	S6631104	9V	7778mA	8000mA
S6631006	S6631106	12V	5833mA	315mA
S6631008	S6631108	15V	4667mA	6000mA
S6631010	S6631110	18V	3889mA	4000mA
S6631020	S6631120	20V	3500mA	3750mA
S6631012	S6631112	24V	2917mA	3000mA



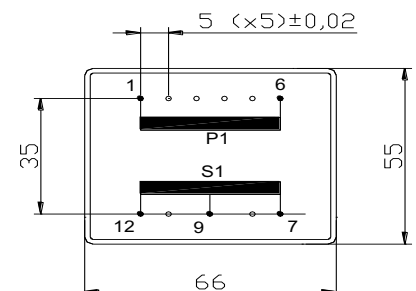
### DUAL SECONDARY, 70VA. Ta40°C

HR REFERENCE		Vo/Vsec=1,3 Vo → Is=0 Vsec → Isec=In		Prot. Prim. 230V: 50mA/T 115V: 100mA/T
Prim. 230V	Prim. 115V	Vsec	Isec	Prot. Sec. mA/F
S6631015	S6631115	2x4,5V	2x7778mA	2x8000mA
S6631001	S6631101	2x6V	2x5833mA	2x6000mA
S6631003	S6631103	2x7,5V	2x4667mA	2x5000mA
S6631005	S6631105	2x9V	2x3889mA	2x4000mA
S6631007	S6631107	2x12V	2x2917mA	2x3000mA
S6631009	S6631109	2x15V	2x2333mA	2x2500mA
S6631011	S6631111	2x18V	2x1944mA	2x2000mA
S6631019	S6631119	2x20V	2x1750mA	2x2000mA
S6631013	S6631113	2x24V	2x1458mA	2x1500mA



### CENTER TAPPED, 70VA. Ta40°C

HR REFERENCE		Vo/Vsec=1,3 Vo → Is=0 Vsec → Isec=In		Prot. Prim. 230V: 50mA/T 115V: 100mA/T
Prim. 230V	Prim. 115V	Vsec	Isec	Prot. Sec. mA/F
S6631035	S6631135	2x4,5V	2x7778mA	2x8000mA
S6631021	S6631121	2x6V	2x5833mA	2x6000mA
S6631023	S6631123	2x7,5V	2x4667mA	2x5000mA
S6631025	S6631125	2x9V	2x3889mA	2x4000mA
S6631027	S6631127	2x12V	2x2917mA	2x3000mA
S6631029	S6631129	2x15V	2x2333mA	2x2500mA
S6631031	S6631131	2x18V	2x1944mA	2x2000mA
S6631039	S6631139	2x20V	2x1750mA	2x2000mA
S6631033	S6631133	2x24V	2x1458mA	2x1500mA



According EN61558, EN60590, EN60472, UL506, UL1585, UL5085