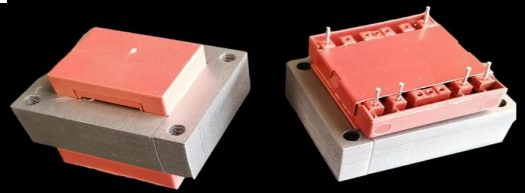




S6631 (EI 66)

60,0VA - Ta70°B

Dim:55x66x54,3mm

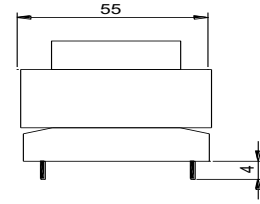
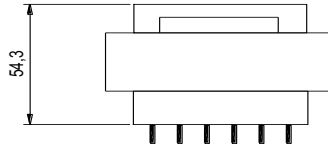
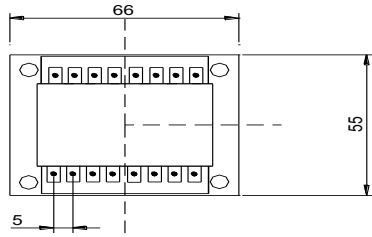


OPEN FRAME TRANSFORMERS

According EN61558, EN60590, EN60472, UL506, UL1585, UL5085 · External protection

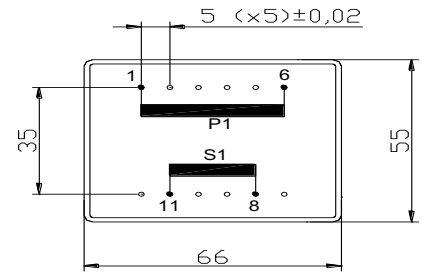
www.efiter.com

[home>>index](#)



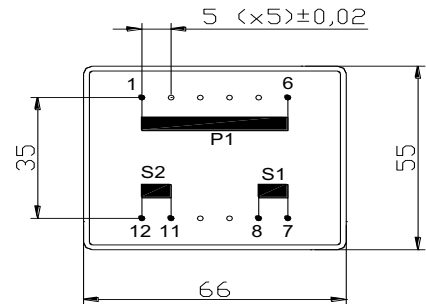
SINGLE SECONDARY, 60VA. Ta70°B

HR REFERENCE		Vo/Vsec=1,3 Vo → Is=0 Vsec → Isec=In		Prot. Prim. 230V: 50mA/T 115V: 100mA/T
Prim. 230V	Prim. 115V	Vsec	Isec	Prot. Sec. mA/F
S6631064	S6631164	4,5V	13333mA	14000mA
S6631050	S6631150	6V	10000mA	11000mA
S6631052	S6631152	7,5V	8000mA	8500mA
S6631054	S6631154	9V	6667mA	7000mA
S6631056	S6631156	12V	5000mA	6000mA
S6631058	S6631158	15V	4000mA	5000mA
S6631060	S6631160	18V	3333mA	3750mA
S6631070	S6631170	20V	3000mA	3125mA
S6631062	S6631172	24V	2500mA	2750mA



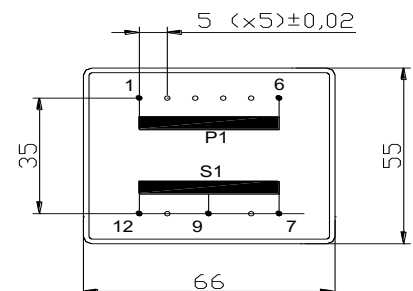
DUAL SECONDARY, 60VA. Ta70°B

HR REFERENCE		Vo/Vsec=1,3 Vo → Is=0 Vsec → Isec=In		Prot. Prim. 230V: 50mA/T 115V: 100mA/T
Prim. 230V	Prim. 115V	Vsec	Isec	Prot. Sec. mA/F
S6631065	S6631165	2x4,5V	2x6667mA	2x7000mA
S6631051	S6631151	2x6V	2x5000mA	2x6000mA
S6631053	S6631153	2x7,5V	2x4000mA	2x5000mA
S6631055	S6631155	2x9V	2x3333mA	2x4000mA
S6631057	S6631157	2x12V	2x2500mA	2x3000mA
S6631059	S6631159	2x15V	2x2000mA	2x2500mA
S6631061	S6631161	2x18V	2x1667mA	2x2000mA
S6631069	S6631169	2x20V	2x1500mA	2x1700mA
S6631063	S6631163	2x24V	2x1250mA	2x1500mA



CENTER TAPPED, 60VA. Ta70°B

HR REFERENCE		Vo/Vsec=1,3 Vo → Is=0 Vsec → Isec=In		Prot. Prim. 230V: 50mA/T 115V: 100mA/T
Prim. 230V	Prim. 115V	Vsec	Isec	Prot. Sec. mA/F
S6625085	S6631185	2x4,5V	2x6667mA	2x7000mA
S6631071	S6631171	2x6V	2x5000mA	2x6000mA
S6631073	S6631173	2x7,5V	2x4000mA	2x5000mA
S6631075	S6631175	2x9V	2x3333mA	2x4000mA
S6631077	S6631177	2x12V	2x2500mA	2x3000mA
S6631079	S6631179	2x15V	2x2000mA	2x2500mA
S6631081	S6631181	2x18V	2x1667mA	2x2000mA
S6631089	S6631189	2x20V	2x1500mA	2x1700mA
S6631083	S6631183	2x24V	2x1250mA	2x1500mA



According EN61558, EN60590, EN60472, UL506, UL1585, UL5085