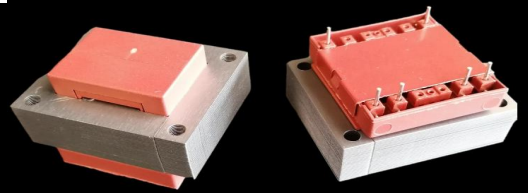




# S6623 (EI 66)

35,0VA - Ta70°B

Dim:55x66x47,3mm

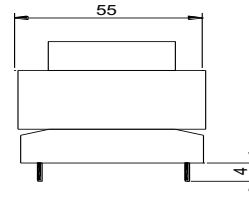
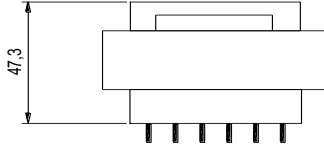
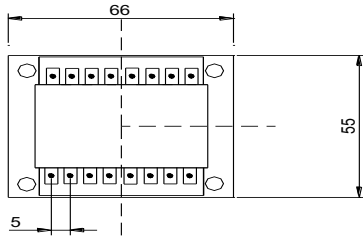


## OPEN FRAME TRANSFORMERS

[www.efiter.com](http://www.efiter.com)

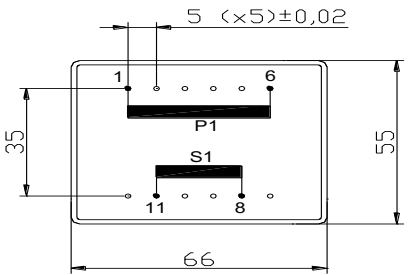
[home>>index](#)

According EN61558, EN60590, EN60472, UL506, UL1585, UL5085 · External protection



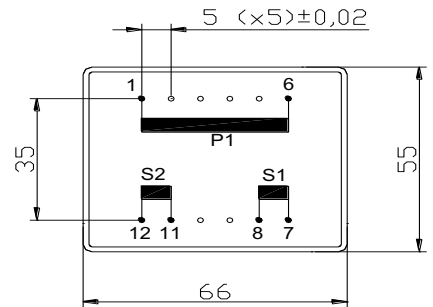
SINGLE SECONDARY, 35VA. Ia<sup>2</sup>/Ub

HR REFERENCE		Vo/Vsec=1,3 Vo → Is=0 Vsec → Isec=In		Prot. Prim. 230V: 50mA/T 115V: 100mA/T
Prim. 230V	Prim. 115V	Vsec	Isec	Prot. Sec. mA/F
S6623064	S6623164	4,5V	7778mA	8000mA
S6623050	S6623150	6V	5833mA	6300mA
S6623052	S6623152	7,5V	4667mA	5000mA
S6623054	S6623154	9V	3889mA	4000mA
S6623056	S6623156	12V	2917mA	3150mA
S6623058	S6623158	15V	2333mA	2500mA
S6623060	S6623160	18V	1944mA	2000mA
S6623070	S6623170	20V	1750mA	2000mA
S6623062	S6623172	24V	1458mA	1600mA



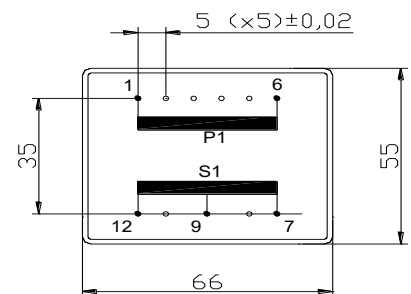
DUAL SECONDARY, 35VA. Ta<sup>70</sup>B

HR REFERENCE		Vo/Vsec=1,3 Vo → Is=0 Vsec → Isec=In		Prot. Prim. 230V: 50mA/T 115V: 100mA/T
Prim. 230V	Prim. 115V	Vsec	Isec	Prot. Sec. mA/F
S6623065	S6623165	2x4,5V	2x3889mA	2x4000mA
S6623051	S6623151	2x6V	2x2917mA	2x3150mA
S6623053	S6623153	2x7,5V	2x2333mA	2x2500mA
S6623055	S6623155	2x9V	2x1944mA	2x2000mA
S6623057	S6623157	2x12V	2x1458mA	2x1600mA
S6623059	S6623159	2x15V	2x1167mA	2x1250mA
S6623061	S6623161	2x18V	2x972mA	2x1000mA
S6623069	S6623169	2x20V	2x875mA	2x1000mA
S6623063	S6623163	2x24V	2x729mA	2x800mA



CENTER TAPPED, 35VA. Ta<sup>70</sup>B

HR REFERENCE		Vo/Vsec=1,3 Vo → Is=0 Vsec → Isec=In		Prot. Prim. 230V: 50mA/T 115V: 100mA/T
Prim. 230V	Prim. 115V	Vsec	Isec	Prot. Sec. mA/F
S6625085	S6623185	2x4,5V	2x3889mA	2x4000mA
S6623071	S6623171	2x6V	2x2917mA	2x3150mA
S6623073	S6623173	2x7,5V	2x2333mA	2x2500mA
S6623075	S6623175	2x9V	2x1944mA	2x2000mA
S6623077	S6623177	2x12V	2x1458mA	2x1600mA
S6623079	S6623179	2x15V	2x1167mA	2x1250mA
S6623081	S6623181	2x18V	2x972mA	2x1000mA
S6623089	S6623189	2x20V	2x875mA	2x1000mA
S6623083	S6623183	2x24V	2x729mA	2x800mA



According EN61558, EN60590, EN60472, UL506, UL1585, UL5085