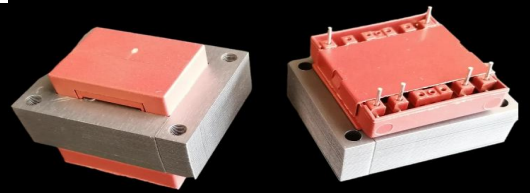




# S6031 (EI 60)

35VA - Ta40°B

Dim:50x60x51,5mm

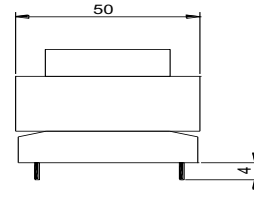
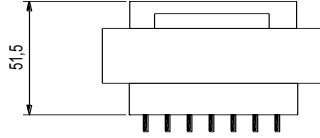
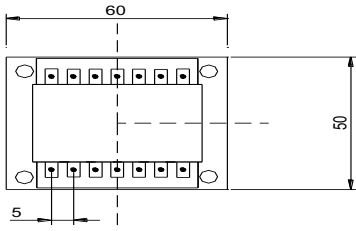


## OPEN FRAME TRANSFORMERS

[www.efiter.com](http://www.efiter.com)

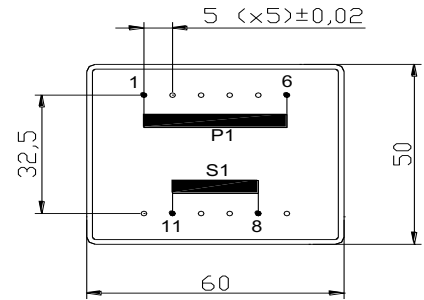
[home>>index](#)

According EN61558, EN60590, EN60472, UL506, UL1585, UL5085 · External protection



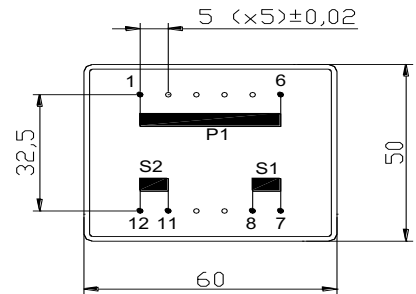
### SINGLE SECONDARY, 35VA. Ta°40B

HR REFERENCE		Vo/Vsec=1,3 Vo → Is=0 Vsec → Isec=In		Prot. Prim. 230V: 50mA/T 115V: 100mA/T
Prim. 230V	Prim. 115V	Vsec	Isec	Prot. Sec. mA/F
S6031014	S6031114	4,5V	7778mA	8000mA
S6031000	S6031100	6V	5833mA	6000mA
S6031002	S6031102	7,5V	4667mA	5000mA
S6031004	S6031104	9V	3889mA	4000mA
S6031006	S6031106	12V	2917mA	3150mA
S6031008	S6031108	15V	2333mA	2500mA
S6031010	S6031110	18V	1944mA	2000mA
S6031020	S6031120	20V	1750mA	2000mA
S6031012	S6031112	24V	1458mA	1600mA



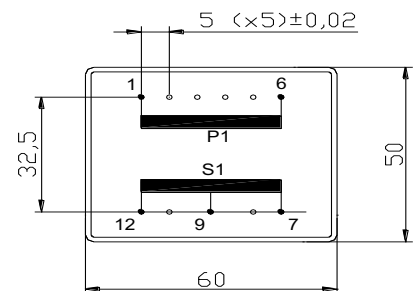
### DUAL SECONDARY, 35VA. Ta°40B

HR REFERENCE		Vo/Vsec=1,3 Vo → Is=0 Vsec → Isec=In		Prot. Prim. 230V: 50mA/T 115V: 100mA/T
Prim. 230V	Prim. 115V	Vsec	Isec	Prot. Sec. mA/F
S6031015	S6031115	2x4,5V	2x3889mA	2x4000mA
S6031001	S6031101	2x6V	2x2917mA	2x3150mA
S6031003	S6031103	2x7,5V	2x2333mA	2x2500mA
S6031005	S6031105	2x9V	2x1944mA	2x2000mA
S6031007	S6031107	2x12V	2x1458mA	2x1600mA
S6031009	S6031109	2x15V	2x1167mA	2x1250mA
S6031011	S6031111	2x18V	2x972mA	2x1000mA
S6031019	S6031119	2x20V	2x875mA	2x1000mA
S6031013	S6031113	2x24V	2x729mA	2x800mA



### CENTER TAPPED, 35VA. Ta°40B

HR REFERENCE		Vo/Vsec=1,3 Vo → Is=0 Vsec → Isec=In		Prot. Prim. 230V: 50mA/T 115V: 100mA/T
Prim. 230V	Prim. 115V	Vsec	Isec	Prot. Sec. mA/F
S6031035	S6031135	2x4,5V	2x3889mA	2x4000mA
S6031021	S6031121	2x6V	2x2917mA	2x3150mA
S6031023	S6031123	2x7,5V	2x2333mA	2x2500mA
S6031025	S6031125	2x9V	2x1944mA	2x2000mA
S6031027	S6031127	2x12V	2x1458mA	2x1600mA
S6031029	S6031129	2x15V	2x1167mA	2x1250mA
S6031031	S6031131	2x18V	2x972mA	2x1000mA
S6031039	S6031139	2x20V	2x875mA	2x1000mA
S6031033	S6031133	2x24V	2x729mA	2x800mA



According EN61558, EN60590, EN60472, UL506, UL1585, UL5085