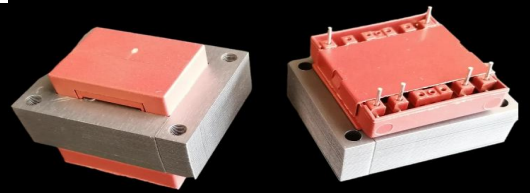




S6031 (EI 60)

30,0VA - Ta70°B

Dim:50x60x51,5mm

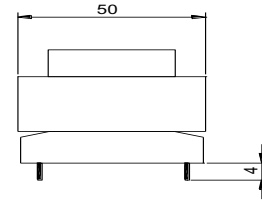
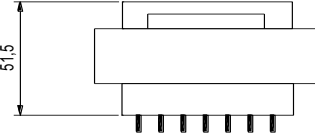
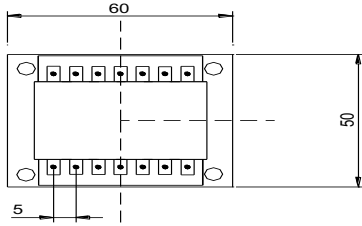


OPEN FRAME TRANSFORMERS

www.efiter.com

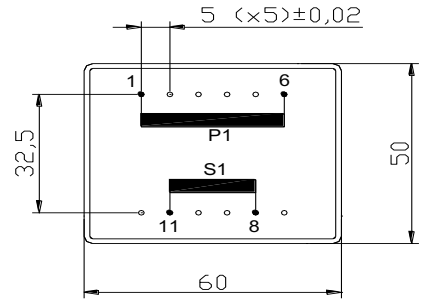
[home>>index](#)

According EN61558, EN60590, EN60472, UL506, UL1585, UL5085 · External protection



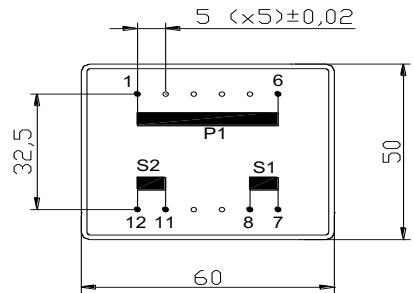
SINGLE SECONDARY, 30VA. Ta70B

HR REFERENCE		Vo/Vsec=1,3 Vo → Is=0 Vsec → Isec=In		Prot. Prim. 230V: 50mA/T 115V: 100mA/T
Prim. 230V	Prim. 115V	Vsec	Isec	Prot. Sec. mA/F
S6031064	S6031164	4,5V	6667mA	6700mA
S6031050	S6031150	6V	5000mA	5100mA
S6031052	S6031152	7,5V	4000mA	4100mA
S6031054	S6031154	9V	3333mA	3500mA
S6031056	S6031156	12V	2500mA	2750mA
S6031058	S6031158	15V	2000mA	2250mA
S6031060	S6031160	18V	1667mA	1750mA
S6031070	S6031170	20V	1500mA	1600mA
S6031062	S6031172	24V	1250mA	1300mA



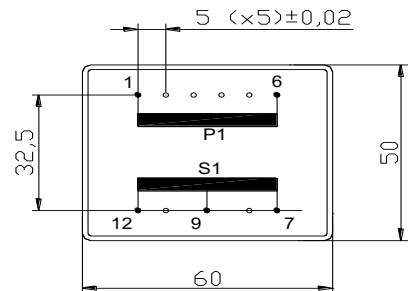
DUAL SECONDARY, 30VA. Ta70B

HR REFERENCE		Vo/Vsec=1,3 Vo → Is=0 Vsec → Isec=In		Prot. Prim. 230V: 50mA/T 115V: 100mA/T
Prim. 230V	Prim. 115V	Vsec	Isec	Prot. Sec. mA/F
S6031065	S6031165	2x4,5V	2x3333mA	2x3500mA
S6031051	S6031151	2x6V	2x2500mA	2x2750mA
S6031053	S6031153	2x7,5V	2x2000mA	2x2150mA
S6031055	S6031155	2x9V	2x1667mA	2x1750mA
S6031057	S6031157	2x12V	2x1250mA	2x1300mA
S6031059	S6031159	2x15V	2x1000mA	2x1125mA
S6031061	S6031161	2x18V	2x833mA	2x1000mA
S6031069	S6031169	2x20V	2x750mA	2x800mA
S6031063	S6031163	2x24V	2x625mA	2x700mA



CENTER TAPPED, 30VA. Ta70B

HR REFERENCE		Vo/Vsec=1,3 Vo → Is=0 Vsec → Isec=In		Prot. Prim. 230V: 50mA/T 115V: 100mA/T
Prim. 230V	Prim. 115V	Vsec	Isec	Prot. Sec. mA/F
S6025085	S6031185	2x4,5V	2x3333mA	2x3500mA
S6031071	S6031171	2x6V	2x2500mA	2x2750mA
S6031073	S6031173	2x7,5V	2x2000mA	2x2150mA
S6031075	S6031175	2x9V	2x1667mA	2x1750mA
S6031077	S6031177	2x12V	2x1250mA	2x1300mA
S6031079	S6031179	2x15V	2x1000mA	2x1125mA
S6031081	S6031181	2x18V	2x833mA	2x1000mA
S6031089	S6031189	2x20V	2x750mA	2x800mA
S6031083	S6031183	2x24V	2x625mA	2x700mA



According EN61558, EN60590, EN60472, UL506, UL1585, UL5085