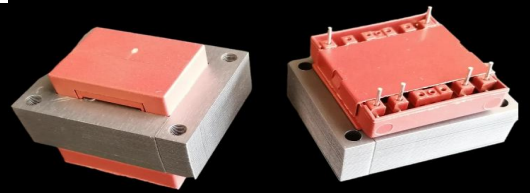




S6021 (EI 60)

25VA - Ta40°C

Dim:50x60x42,1mm

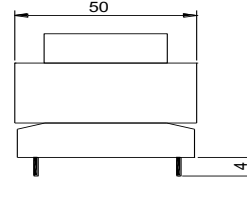
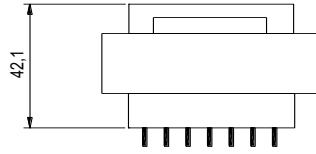
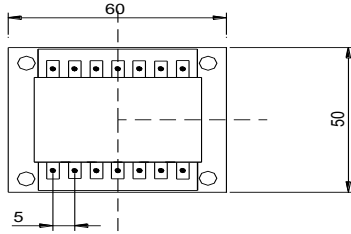


OPEN FRAME TRANSFORMERS

www.efiter.com

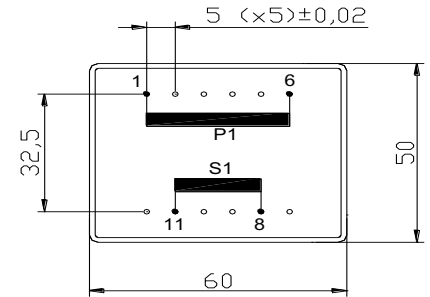
[home>>index](#)

According EN61558, EN60590, EN60472, UL506, UL1585, UL5085 · External protection



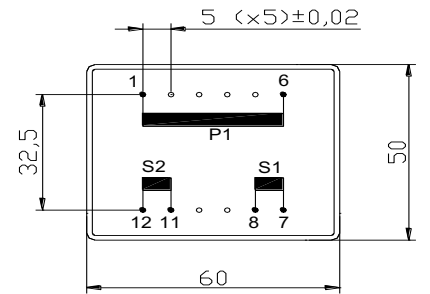
SINGLE SECONDARY, 25VA. Ta=40°C

HR REFERENCE		Vo/Vsec=1,3 Vo → Is=0 Vsec → Isec=In		Prot. Prim. 230V: 50mA/T 115V: 100mA/T
Prim. 230V	Prim. 115V	Vsec	Isec	Prot. Sec. mA/F
S6021014	S6021114	4,5V	5556mA	5600mA
S6021000	S6021100	6V	4167mA	4250mA
S6021002	S6021102	7,5V	3333mA	3450mA
S6021004	S6021104	9V	2778mA	2800mA
S6021006	S6021106	12V	2083mA	2100mA
S6021008	S6021108	15V	1667mA	1700mA
S6021010	S6021110	18V	1389mA	1400mA
S6021020	S6021120	20V	1250mA	1300mA
S6021012	S6021112	24V	1042mA	1100mA



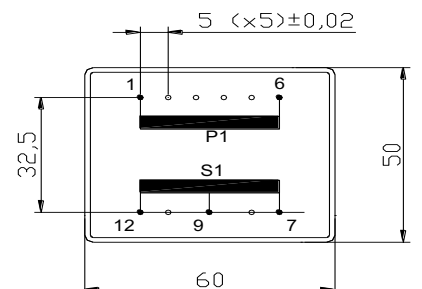
DUAL SECONDARY, 25VA. Ta=40°C

HR REFERENCE		Vo/Vsec=1,3 Vo → Is=0 Vsec → Isec=In		Prot. Prim. 230V: 50mA/T 115V: 100mA/T
Prim. 230V	Prim. 115V	Vsec	Isec	Prot. Sec. mA/F
S6021015	S6021115	2x4,5V	2x2778mA	2x2800mA
S6021001	S6021101	2x6V	2x2083mA	2x2100mA
S6021003	S6021103	2x7,5V	2x1667mA	2x1700mA
S6021005	S6021105	2x9V	2x1389mA	2x1400mA
S6021007	S6021107	2x12V	2x1042mA	2x1100mA
S6021009	S6021109	2x15V	2x833mA	2x900mA
S6021011	S6021111	2x18V	2x694mA	2x750mA
S6021019	S6021119	2x20V	2x625mA	2x700mA
S6021013	S6021113	2x24V	2x521mA	2x600mA



CENTER TAPPED, 25VA. Ta=40°C

HR REFERENCE		Vo/Vsec=1,3 Vo → Is=0 Vsec → Isec=In		Prot. Prim. 230V: 50mA/T 115V: 100mA/T
Prim. 230V	Prim. 115V	Vsec	Isec	Prot. Sec. mA/F
S6021035	S6021135	2x4,5V	2x2778mA	2x2800mA
S6021021	S6021121	2x6V	2x2083mA	2x2100mA
S6021023	S6021123	2x7,5V	2x1667mA	2x1700mA
S6021025	S6021125	2x9V	2x1389mA	2x1400mA
S6021027	S6021127	2x12V	2x1042mA	2x1100mA
S6021029	S6021129	2x15V	2x833mA	2x900mA
S6021031	S6021131	2x18V	2x694mA	2x750mA
S6021039	S6021139	2x20V	2x625mA	2x700mA
S6021033	S6021133	2x24V	2x521mA	2x600mA



According EN61558, EN60590, EN60472, UL506, UL1585, UL5085