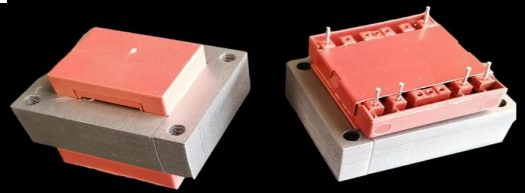




# S5419 (EI 54)

13,0VA - Ta70°B

Dim:45x54x38,8mm

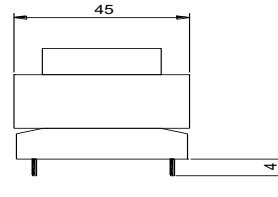
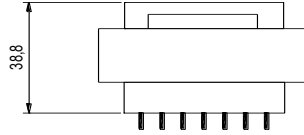
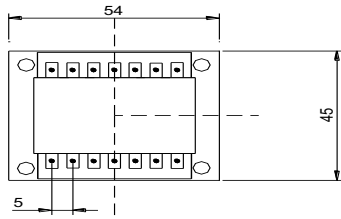


## OPEN FRAME TRANSFORMERS

According EN61558, EN60590, EN60472, UL506, UL1585, UL5085 · External protection

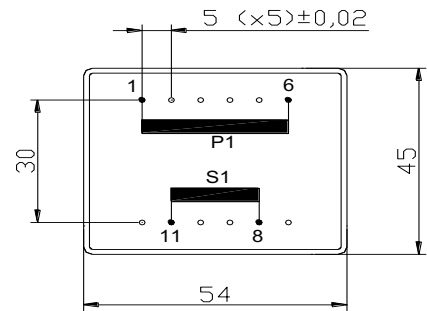
[www.efiter.com](http://www.efiter.com)

[home>>index](#)



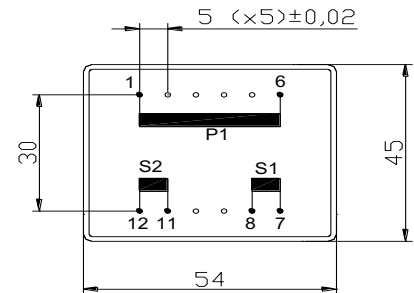
### SINGLE SECONDARY, 13VA. Ta°70B

HR REFERENCE		Vo/Vsec=1,3 Vo → Is=0 Vsec → Isec=In		Prot. Prim. 230V: 50mA/T 115V: 100mA/T
Prim. 230V	Prim. 115V	Vsec	Isec	Prot. Sec. mA/F
S5419064	S5419164	4,5V	2889mA	2900mA
S5419050	S5419150	6V	2167mA	2200mA
S5419052	S5419152	7,5V	1733mA	1750mA
S5419054	S5419154	9V	1444mA	1500mA
S5419056	S5419156	12V	1083mA	1125mA
S5419058	S5419158	15V	867mA	900mA
S5419060	S5419160	18V	722mA	750mA
S5419070	S5419170	20V	650mA	700mA
S5419062	S5419172	24V	542mA	600mA



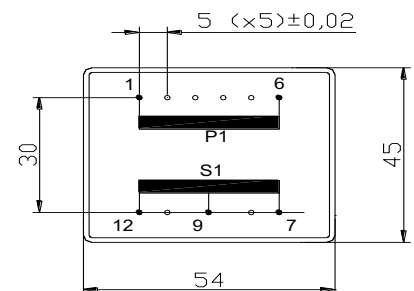
### DUAL SECONDARY, 13VA. Ta°70B

HR REFERENCE		Vo/Vsec=1,3 Vo → Is=0 Vsec → Isec=In		Prot. Prim. 230V: 50mA/T 115V: 100mA/T
Prim. 230V	Prim. 115V	Vsec	Isec	Prot. Sec. mA/F
S5419065	S5419165	2x4,5V	2x1444mA	2x1500mA
S5419051	S5419151	2x6V	2x1083mA	2x1100mA
S5419053	S5419153	2x7,5V	2x867mA	2x900mA
S5419055	S5419155	2x9V	2x722mA	2x750mA
S5419057	S5419157	2x12V	2x542mA	2x550mA
S5419059	S5419159	2x15V	2x433mA	2x450mA
S5419061	S5419161	2x18V	2x361mA	2x375mA
S5419069	S5419169	2x20V	2x325mA	2x350mA
S5419063	S5419163	2x24V	2x271mA	2x300mA



### CENTER TAPPED, 13VA. Ta°70B

HR REFERENCE		Vo/Vsec=1,3 Vo → Is=0 Vsec → Isec=In		Prot. Prim. 230V: 50mA/T 115V: 100mA/T
Prim. 230V	Prim. 115V	Vsec	Isec	Prot. Sec. mA/F
S5425085	S5419185	2x4,5V	2x1444mA	2x1500mA
S5419071	S5419171	2x6V	2x1083mA	2x1100mA
S5419073	S5419173	2x7,5V	2x867mA	2x900mA
S5419075	S5419175	2x9V	2x722mA	2x750mA
S5419077	S5419177	2x12V	2x542mA	2x550mA
S5419079	S5419179	2x15V	2x433mA	2x450mA
S5419081	S5419181	2x18V	2x361mA	2x375mA
S5419089	S5419189	2x20V	2x325mA	2x350mA
S5419083	S5419183	2x24V	2x271mA	2x300mA



According EN61558, EN60590, EN60472, UL506, UL1585, UL5085