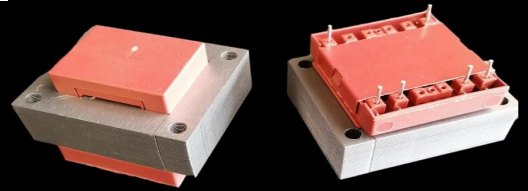




S4826 (EI 48)

14VA - Ta40°C

Dim:40x48x43,5mm

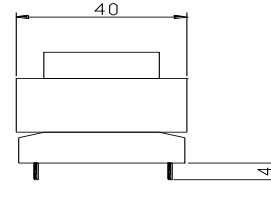
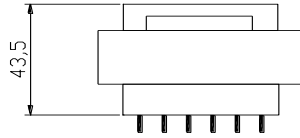
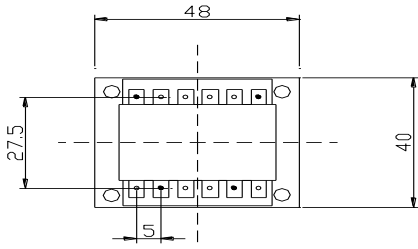


OPEN FRAME TRANSFORMERS

According EN61558, EN60590, EN60472, UL506, UL1585, UL5085 · External protection

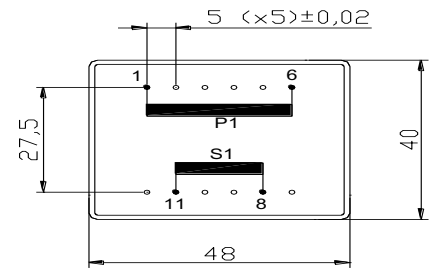
www.efiter.com

[home>>index](#)



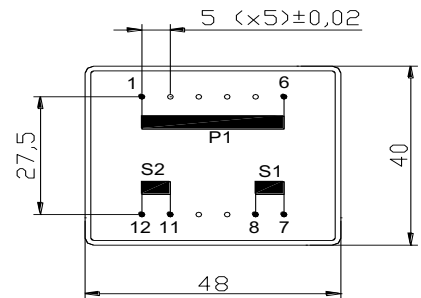
SINGLE SECONDARY, 14VA. Ta40°C

HR REFERENCE		Vo/Vsec=1,3 Vo → Is=0 Vsec → Isec=In		Prot. Prim. 230V: 50mA/T 115V: 100mA/T
Prim. 230V	Prim. 115V	Vsec	Isec	Prot. Sec. mA/F
S4826014	S4826114	4,5V	3111mA	3150mA
S4826000	S4826100	6V	2333mA	2400mA
S4826002	S4826102	7,5V	1867mA	1900mA
S4826004	S4826104	9V	1556mA	1600mA
S4826006	S4826106	12V	1167mA	1200mA
S4826008	S4826108	15V	933mA	1000mA
S4826010	S4826110	18V	778mA	800mA
S4826020	S4826120	20V	700mA	750mA
S4826012	S4826112	24V	583mA	600mA



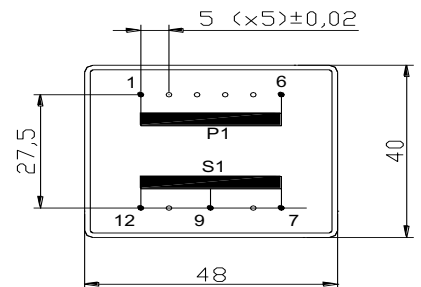
DUAL SECONDARY, 14VA. Ta40°C

HR REFERENCE		Vo/Vsec=1,3 Vo → Is=0 Vsec → Isec=In		Prot. Prim. 230V: 50mA/T 115V: 100mA/T
Prim. 230V	Prim. 115V	Vsec	Isec	Prot. Sec. mA/F
S4826015	S4826115	2x4,5V	2x1556mA	2x1600mA
S4826001	S4826101	2x6V	2x1167mA	2x1200mA
S4826003	S4826103	2x7,5V	2x993mA	2x1000mA
S4826005	S4826105	2x9V	2x778mA	2x800mA
S4826007	S4826107	2x12V	2x583mA	2x600mA
S4826009	S4826109	2x15V	2x467mA	2x500mA
S4826011	S4826111	2x18V	2x389mA	2x400mA
S4826019	S4826119	2x20V	2x350mA	2x375mA
S4826013	S4826113	2x24V	2x292mA	2x300mA



CENTER TAPPED, 14VA. Ta40°C

HR REFERENCE		Vo/Vsec=1,3 Vo → Is=0 Vsec → Isec=In		Prot. Prim. 230V: 50mA/T 115V: 100mA/T
Prim. 230V	Prim. 115V	Vsec	Isec	Prot. Sec. mA/F
S4826035	S4826135	2x4,5V	2x1556mA	2x1600mA
S4826021	S4826121	2x6V	2x1167mA	2x1200mA
S4826023	S4826123	2x7,5V	2x993mA	2x1000mA
S4826025	S4826125	2x9V	2x778mA	2x800mA
S4826027	S4826127	2x12V	2x583mA	2x600mA
S4826029	S4826129	2x15V	2x467mA	2x500mA
S4826031	S4826131	2x18V	2x389mA	2x400mA
S4826039	S4826139	2x20V	2x350mA	2x375mA
S4826033	S4826133	2x24V	2x292mA	2x300mA



According EN61558, EN60590, EN60472, UL506, UL1585, UL5085