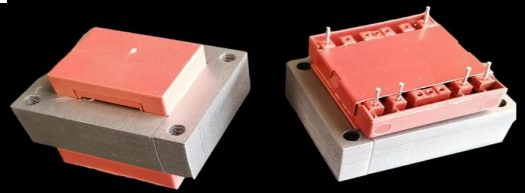




S4821 (EI 48)

12VA - Ta40°B

Dim:40x48x38,5mm

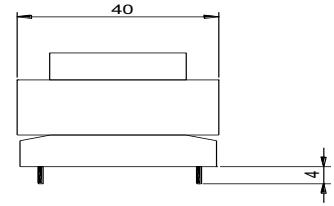
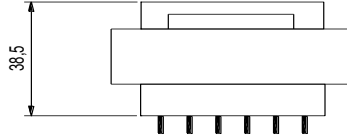
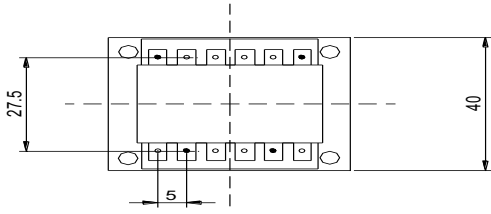


OPEN FRAME TRANSFORMERS

www.efiter.com

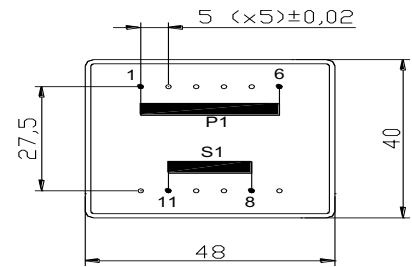
home>>index

According EN61558, EN60590, EN60472, UL506, UL1585, UL5085 - External protection



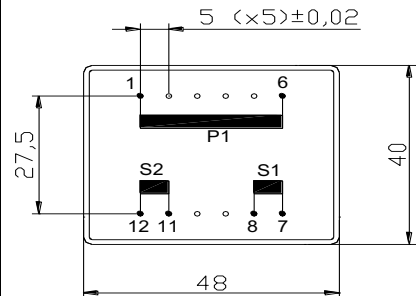
SINGLE SECONDARY, 12VA. Ta°40B

HR REFERENCE		Vo/Vsec=1,3 Vo → Is=0 Vsec → Isec=In		Prot. Prim. 230V: 50mA/T 115V: 100mA/T
Prim. 230V	Prim. 115V	Vsec	Isec	Prot. Sec. mA/F
S4821014	S4821114	4,5V	2667mA	2700mA
S4821000	S4821100	6V	2000mA	2250mA
S4821002	S4821102	7,5V	1600mA	1700mA
S4821004	S4821104	9V	1333mA	1400mA
S4821006	S4821106	12V	1000mA	1050mA
S4821008	S4821108	15V	800mA	875mA
S4821010	S4821110	18V	667mA	700mA
S4821020	S4821120	20V	600mA	650mA
S4821012	S4821112	24V	500mA	550mA



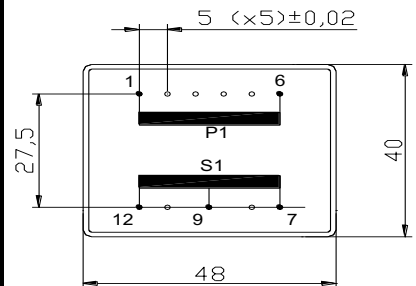
DUAL SECONDARY, 12VA. Ta°40B

HR REFERENCE		Vo/Vsec=1,3 Vo → Is=0 Vsec → Isec=In		Prot. Prim. 230V: 50mA/T 115V: 100mA/T
Prim. 230V	Prim. 115V	Vsec	Isec	Prot. Sec. mA/F
S4821015	S4821115	2x4,5V	2x1333mA	2x1400mA
S4821001	S4821101	2x6V	2x1000mA	2x1050mA
S4821003	S4821103	2x7,5V	2x800mA	2x850mA
S4821005	S4821105	2x9V	2x667mA	2x700mA
S4821007	S4821107	2x12V	2x500mA	2x550mA
S4821009	S4821109	2x15V	2x400mA	2x450mA
S4821011	S4821111	2x18V	2x333mA	2x350mA
S4821019	S4821119	2x20V	2x300mA	2x325mA
S4821013	S4821113	2x24V	2x250mA	2x275mA



CENTER TAPPED, 12VA. Ta°40B

HR REFERENCE		Vo/Vsec=1,3 Vo → Is=0 Vsec → Isec=In		Prot. Prim. 230V: 50mA/T 115V: 100mA/T
Prim. 230V	Prim. 115V	Vsec	Isec	Prot. Sec. mA/F
S4821035	S4821135	2x4,5V	2x1333mA	2x1400mA
S4821021	S4821121	2x6V	2x1000mA	2x1050mA
S4821023	S4821123	2x7,5V	2x800mA	2x850mA
S4821025	S4821125	2x9V	2x667mA	2x700mA
S4821027	S4821127	2x12V	2x500mA	2x550mA
S4821029	S4821129	2x15V	2x400mA	2x450mA
S4821031	S4821131	2x18V	2x333mA	2x350mA
S4821039	S4821139	2x20V	2x300mA	2x325mA
S4821033	S4821133	2x24V	2x250mA	2x275mA



According EN61558, EN60590, EN60472, UL506, UL1585, UL5085