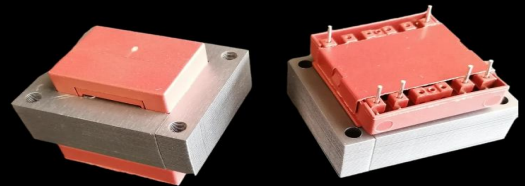




S4817 (EI 48)

10VA - Ta40°C

Dim:40x48x34,8mm

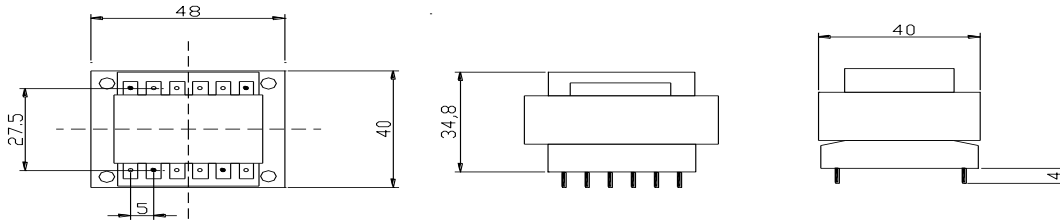


OPEN FRAME TRANSFORMERS

www.efiter.com

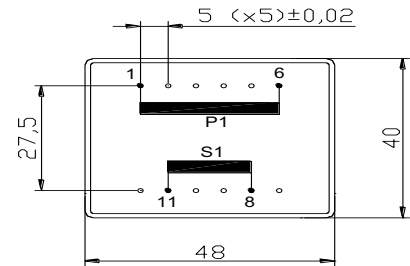
[home>>index](#)

According EN61558, EN60590, EN60472, UL506, UL1585, UL5085 · External protection



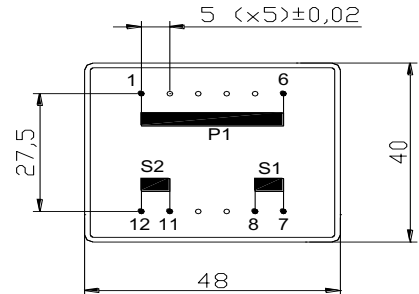
SINGLE SECONDARY, 10VA. Ta40°C

HR REFERENCE		Vo/Vsec=1,3 Vo → Is=0 Vsec → Isec=In		Prot. Prim. 230V: 50mA/T 115V: 100mA/T
Prim. 230V	Prim. 115V	Vsec	Isec	Prot. Sec. mA/F
S4817014	S4817114	4,5V	2222mA	2300mA
S4817000	S4817100	6V	1667mA	1750mA
S4817002	S4817102	7,5V	1333mA	1500mA
S4817004	S4817104	9V	1111mA	1250mA
S4817006	S4817106	12V	833mA	900mA
S4817008	S4817108	15V	667mA	675mA
S4817010	S4817110	18V	556mA	600mA
S4817020	S4817120	20V	500mA	550mA
S4817012	S4817112	24V	417mA	500mA



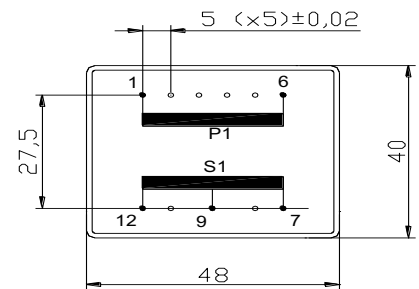
DUAL SECONDARY, 10VA. Ta40°C

HR REFERENCE		Vo/Vsec=1,3 Vo → Is=0 Vsec → Isec=In		Prot. Prim. 230V: 50mA/T 115V: 100mA/T
Prim. 230V	Prim. 115V	Vsec	Isec	Prot. Sec. mA/F
S4817015	S4817115	2x4,5V	2x1111mA	2x1250mA
S4817001	S4817101	2x6V	2x833mA	2x900mA
S4817003	S4817103	2x7,5V	2x667mA	2x675mA
S4817005	S4817105	2x9V	2x556mA	2x600mA
S4817007	S4817107	2x12V	2x417mA	2x500mA
S4817009	S4817109	2x15V	2x333mA	2x375mA
S4817011	S4817111	2x18V	2x278mA	2x300mA
S4817019	S4817119	2x20V	2x250mA	2x275mA
S4817013	S4817113	2x24V	2x208mA	2x250mA



CENTER TAPPED, 10VA. Ta40°C

HR REFERENCE		Vo/Vsec=1,3 Vo → Is=0 Vsec → Isec=In		Prot. Prim. 230V: 50mA/T 115V: 100mA/T
Prim. 230V	Prim. 115V	Vsec	Isec	Prot. Sec. mA/F
S4817035	S4817135	2x4,5V	2x1111mA	2x1250mA
S4817021	S4817121	2x6V	2x833mA	2x900mA
S4817023	S4817123	2x7,5V	2x667mA	2x675mA
S4817025	S4817125	2x9V	2x556mA	2x600mA
S4817027	S4817127	2x12V	2x417mA	2x500mA
S4817029	S4817129	2x15V	2x333mA	2x375mA
S4817031	S4817131	2x18V	2x278mA	2x300mA
S4817039	S4817139	2x20V	2x250mA	2x275mA
S4817033	S4817133	2x24V	2x208mA	2x250mA



According EN61558, EN60590, EN60472, UL506, UL1585, UL5085