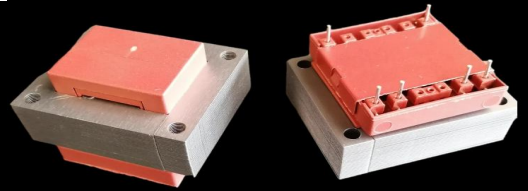




S3820 (EI 38)

4VA - Ta70°B

Dim:32x38x33,2mm

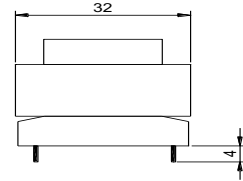
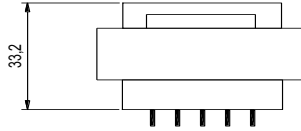
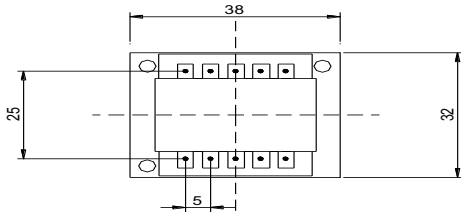


OPEN FRAME TRANSFORMERS

www.efiter.com

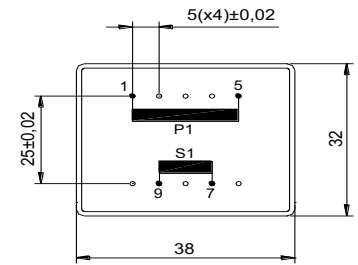
[home>>index](#)

According EN61558, EN60590, EN60472, UL506, UL1585, UL5085 · External protection



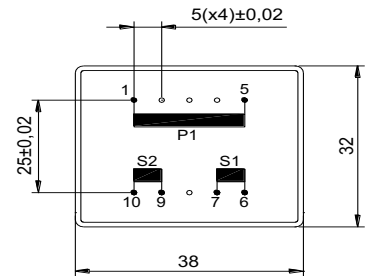
SINGLE SECONDARY, 4,0VA. Ta°70B

HR REFERENCE		Vo/Vsec=1,3 Vo → Is=0 Vsec → Isec=In		Prot. Prim. 230V: 50mA/T 115V: 100mA/T
Prim. 230V	Prim. 115V	Vsec	Isec	Prot. Sec. mA/F
S3820064	S3820164	4,5V	889mA	900mA
S3820050	S3820150	6V	667mA	700mA
S3820052	S3820152	7,5V	533mA	600mA
S3820054	S3820154	9V	444mA	500mA
S3820056	S3820156	12V	333mA	375mA
S3820058	S3820158	15V	267mA	300mA
S3820060	S3820160	18V	222mA	250mA
S3820070	S3820170	20V	200mA	250mA
S3820062	S3820172	24V	167mA	200mA



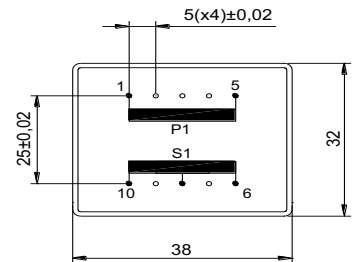
DUAL SECONDARY, 4,0VA. Ta°70B

HR REFERENCE		Vo/Vsec=1,3 Vo → Is=0 Vsec → Isec=In		Prot. Prim. 230V: 50mA/T 115V: 100mA/T
Prim. 230V	Prim. 115V	Vsec	Isec	Prot. Sec. mA/F
S3820065	S3820165	2x4,5V	2x444mA	2x500mA
S3820051	S3820151	2x6V	2x333mA	2x375mA
S3820053	S3820153	2x7,5V	2x267mA	2x300mA
S3820055	S3820155	2x9V	2x222mA	2x250mA
S3820057	S3820157	2x12V	2x167mA	2x200mA
S3820059	S3820159	2x15V	2x133mA	2x150mA
S3820061	S3820161	2x18V	2x111mA	2x125mA
S3820069	S3820169	2x20V	2x100mA	2x125mA
S3820063	S3820163	2x24V	2x83mA	2x100mA



CENTER TAPPED, 4,0VA. Ta°70B

HR REFERENCE		Vo/Vsec=1,3 Vo → Is=0 Vsec → Isec=In		Prot. Prim. 230V: 50mA/T 115V: 100mA/T
Prim. 230V	Prim. 115V	Vsec	Isec	Prot. Sec. mA/F
S3825085	S3820185	2x4,5V	2x444mA	2x500mA
S3820071	S3820171	2x6V	2x333mA	2x375mA
S3820073	S3820173	2x7,5V	2x267mA	2x300mA
S3820075	S3820175	2x9V	2x222mA	2x250mA
S3820077	S3820177	2x12V	2x167mA	2x200mA
S3820079	S3820179	2x15V	2x133mA	2x150mA
S3820081	S3820181	2x18V	2x111mA	2x125mA
S3820089	S3820189	2x20V	2x100mA	2x125mA
S3820083	S3820183	2x24V	2x83mA	2x100mA



According EN61558, EN60590, EN60472, UL506, UL1585, UL5085