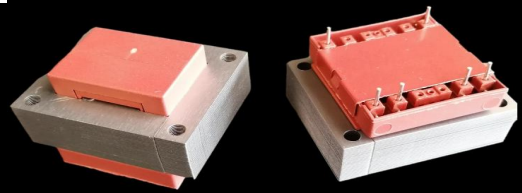




S3814 (EI 38)

3,5VA - Ta40°C

Dim:32x38x26,2mm

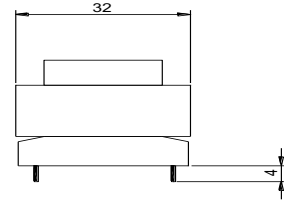
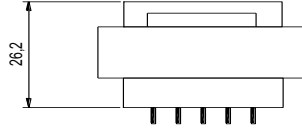
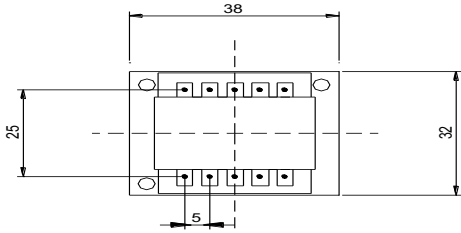


OPEN FRAME TRANSFORMERS

www.efiter.com

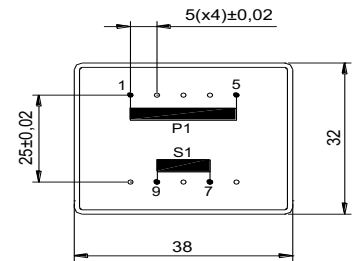
[home>>index](#)

According EN61558, EN60590, EN60472, UL506, UL1585, UL5085 · External protection



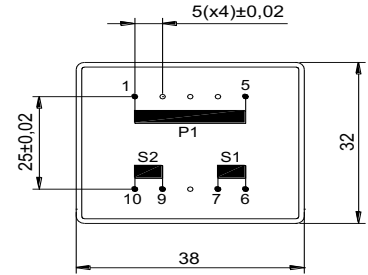
SINGLE SECONDARY, 3,5VA. Ta40°C

HR REFERENCE		Vo/Vsec=1,3 Vo → Is=0 Vsec → Isec=In		Prot. Prim. 230V: 50mA/T 115V: 100mA/T
Prim. 230V	Prim. 115V	Vsec	Isec	Prot. Sec. mA/F
S3814014	S3814114	4,5V	0,778mA	800mA
S3814000	S3814100	6V	0,583mA	630mA
S3814002	S3814102	7,5V	0,467mA	500mA
S3814004	S3814104	9V	0,389mA	400mA
S3814006	S3814106	12V	0,292mA	315mA
S3814008	S3814108	15V	0,233mA	250mA
S3814010	S3814110	18V	0,194mA	200mA
S3814020	S3814120	20V	0,175mA	200mA
S3814012	S3814112	24V	0,146mA	160mA



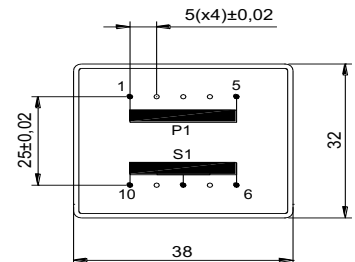
DUAL SECONDARY, 3,5VA. Ta40°C

HR REFERENCE		Vo/Vsec=1,3 Vo → Is=0 Vsec → Isec=In		Prot. Prim. 230V: 50mA/T 115V: 100mA/T
Prim. 230V	Prim. 115V	Vsec	Isec	Prot. Sec. mA/F
S3814015	S3814115	2x4,5V	2x389mA	2x400mA
S3814001	S3814101	2x6V	2x292mA	2x315mA
S3814003	S3814103	2x7,5V	2x233mA	2x250mA
S3814005	S3814105	2x9V	2x194mA	2x200mA
S3814007	S3814107	2x12V	2x146mA	2x160mA
S3814009	S3814109	2x15V	2x117mA	2x125mA
S3814011	S3814111	2x18V	2x97mA	2x100mA
S3814019	S3814119	2x20V	2x88mA	2x100mA
S3814013	S3814113	2x24V	2x73mA	2x80mA



CENTER TAPPED, 3,5VA. Ta40°C

HR REFERENCE		Vo/Vsec=1,3 Vo → Is=0 Vsec → Isec=In		Prot. Prim. 230V: 50mA/T 115V: 100mA/T
Prim. 230V	Prim. 115V	Vsec	Isec	Prot. Sec. mA/F
S3895035	S3814135	2x4,5V	2x389mA	2x400mA
S3814021	S3814121	2x6V	2x292mA	2x315mA
S3814023	S3814123	2x7,5V	2x233mA	2x250mA
S3814025	S3814125	2x9V	2x194mA	2x200mA
S3814027	S3814127	2x12V	2x146mA	2x160mA
S3814029	S3814129	2x15V	2x117mA	2x125mA
S3814031	S3814131	2x18V	2x97mA	2x100mA
S3814039	S3814139	2x20V	2x88mA	2x100mA
S3814033	S3814133	2x24V	2x73mA	2x80mA



According EN61558, EN60590, EN60472, UL506, UL1585, UL5085