



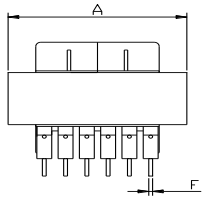
# HIGH FREQUENCY TRANSFORMERS EE Series



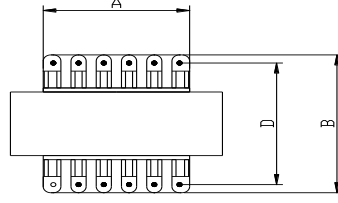
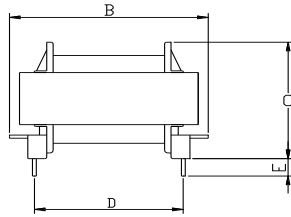
www.efiter.com

home>>index

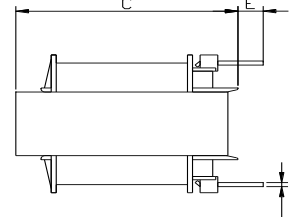
According EN61558, EN60590, EN60472, UL506, UL1585, UL5085 · External protection



HORIZONTAL



VERTICAL



• All measures are in mm.

## MECHANICAL AND ELECTRICAL PARAMETERS

HORIZONTAL	A (Max)	B	C	D	E	F	MAX POWER
EE10	12.0	12.0	10.8	10.5	2.5	0,8	4W
EE13	15.0	15.0	13.5	10.5	2.5	0,8	6W
EE16	17.5	17.5	15.0	11.0	3.0	1.0	10W
EE19	22.0	22.0	12.4	12.5	3.0	1.0	15W
EE22	24.0	24.0	13.0	13.0	5.0	1.0	20W
EE25	26.5	26.5	17.3	14.0	5.0	1.0	25W
EE30	32.0	32.0	22.0	25.0	5.0	1.0	30W
EE40	34.0	34.0	28.6	25.8	5.0	1.0	35W
EE42	42.0	42.0	39.1	37.8	5.0	1.0	280W
EE55	56.0	56.0	48.0	40.0	5.0	1.0	280W
EE65	66.0	66.0	56.0	45.0	5.0	1.0	1450W
EE70	71.0	71.0	58.0	50.0	5.0	1.0	2118W
VERTICAL	A (Max)	B	C	D	E	F	MAX POWER
EE10	12.0	10.4	13.0	10.5	2.5	0,8	4W
EE13	15.0	12.2	14.0	10.5	2.5	0,8	6W
EE16	17.5	14.4	15.0	11.0	3.0	1.0	10W
EE19	22.0	15.9	19.0	12.5	3.0	1.0	15W
EE22	24.0	16.5	20.0	13.0	5.0	1.0	20W
EE25	26.5	17.2	22.0	14.0	5.0	1.0	25W
EE30	32.0	28.0	30.	25.0	5.0	1.0	30W
EE40	34.0	28.9	33.0	25.8	5.0	1.0	35W
EE42	42.0	37.4	43.0	37.8	5.0	1.0	45W
EE55	56.0	56.0	48.0	40.0	5.0	1.0	280W
EE65	66.0	66.0	56.0	45.0	5.0	1.0	1450W
EE70	71.0	71.0	58.0	50.0	5.0	1.0	2118W

## FEATURES

- Power range:4 Wto 2118W
- Operating Frequency: 50 to 200KHz
- Magnetic flux leakage small,high power density, suitable for flags desing.
- Operating temperature: -40°C to +105°C
- All parts meet ROHS compliance
- Construction according to regulation IEC EN60950, EN 61558
- Creepage distance according to regulation IEC EN60950, EN 61558, EN 60335