



E4817 (EI 48/16,8)

8VA - Ta70°B

weight - 290gr.

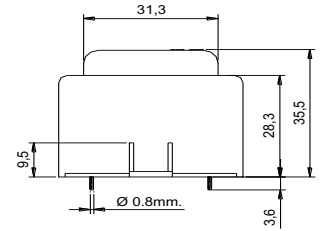
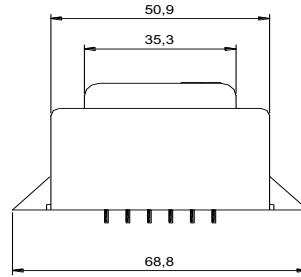
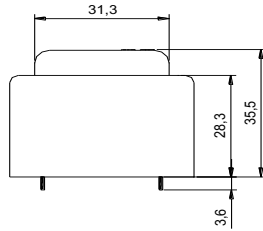
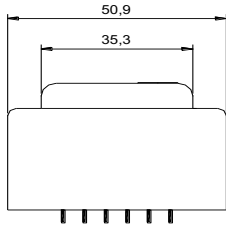


www.efiter.com

home>>index

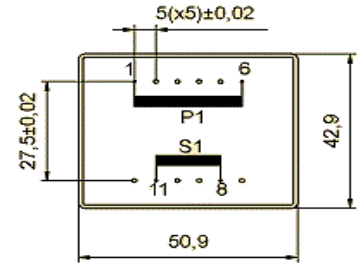
ENCAPSULATED TRANSFORMERS

According EN61558, EN60590, EN60472, UL506, UL1585, UL5085 · External protection



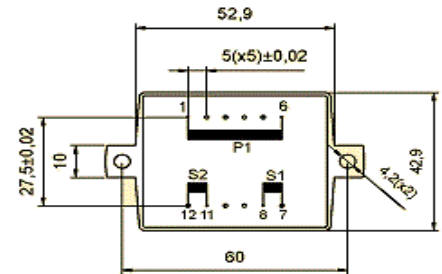
SINGLE SECONDARY, 8VA. Ta°70B

HR REFERENCE		HR REFERENCE with fixing holes		Vo/Vsec=1,3 Vo --> Is=0 Vsec --> Isec=In		Prot. Prim. 230V: 50mA/T 115V: 100mA/T
Prim. 230V	Prim. 115V	Prim. 230V	Prim. 115V	Vsec	Isec	Prot. Sec. mA/F
E4817064	E4817164	E4817564	E4817664	4,5V	1777mA	2500mA
E4817050	E4817150	E4817550	E4817650	6V	1333mA	2000mA
E4817052	E4817152	E4817552	E4817652	7,5V	1066mA	1600mA
E4817054	E4817154	E4817554	E4817654	9V	888mA	1250mA
E4817056	E4817156	E4817556	E4817656	12V	666mA	1000mA
E4817058	E4817158	E4817558	E4817658	15V	533mA	800mA
E4817060	E4817160	E4817560	E4817660	18V	444mA	630mA
E4817062	E4817162	E4817562	E4817662	24V	333mA	500mA



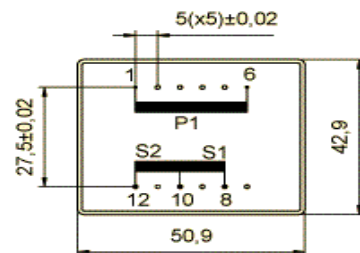
DUAL SECONDARY, 8VA. Ta°70B

HR REFERENCE		HR REFERENCE with fixing holes		Vo/Vsec=1,3 Vo --> Is=0 Vsec --> Isec=In		Prot. Prim. 230V: 50mA/T 115V: 100mA/T
Prim. 230V	Prim. 115V	Prim. 230V	Prim. 115V	Vsec	Isec	Prot. Sec. mA/F
E4817065	E4817165	E4817565	E4817665	2x4,5V	2x888mA	2x1000mA
E4817051	E4817151	E4817551	E4817651	2x6V	2x666mA	2x800mA
E4817053	E4817153	E4817553	E4817653	2x7,5V	2x533mA	2x630mA
E4817055	E4817155	E4817555	E4817655	2x9V	2x444mA	2x500mA
E4817057	E4817157	E4817557	E4817657	2x12V	2x333mA	2x400mA
E4817059	E4817159	E4817559	E4817659	2x15V	2x266mA	2x315mA
E4817061	E4817161	E4817561	E4817661	2x18V	2x222mA	2x250mA
E4817063	E4817163	E4817563*	E4817663	2x24V	2x166mA	2x200mA



CENTER TAPPED, 8VA. Ta°70B

HR REFERENCE		HR REFERENCE with fixing holes		Vo/Vsec=1,3 Vo --> Is=0 Vsec --> Isec=In		Prot. Prim. 230V: 50mA/T 115V: 100mA/T
Prim. 230V	Prim. 115V	Prim. 230V	Prim. 115V	Vsec	Isec	Prot. Sec. mA/F
E4817085	E4817185	E4817585	E4817685	2x4,5V	2x888mA	2x1000mA
E4817071	E4817171	E4817571	E4817671	2x6V	2x666mA	2x800mA
E4817073	E4817173	E4817573	E4817673	2x7,5V	2x533mA	2x630mA
E4817075	E4817175	E4817575	E4817675	2x9V	2x444mA	2x500mA
E4817077	E4817177	E4817577	E4817677	2x12V	2x333mA	2x400mA
E4817079	E4817179	E4817579	E4817679	2x15V	2x266mA	2x315mA
E4817081	E4817181	E4817581	E4817681	2x18V	2x222mA	2x250mA
E4817083	E4817183	E4817583*	E4817683	2x24V	2x166mA	2x200mA



VDE certification: Vin 230V - Vout 4,5...36V or 2x4,5V...2x18V models aproved. File 40044902