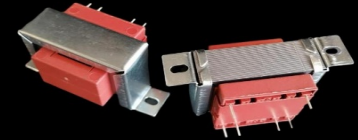




C9650 (EI 96)

185VA - Ta40°C

Dim:80x96x98mm

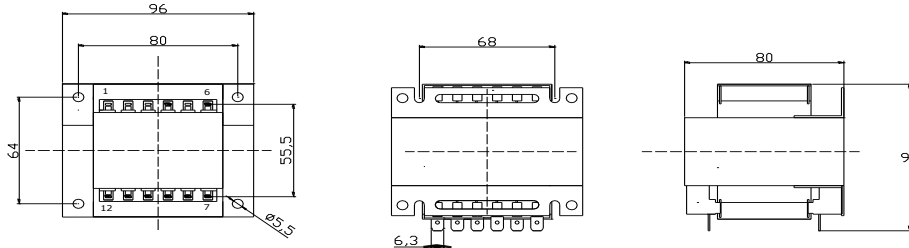


www.efiter.com

[home>>index](#)

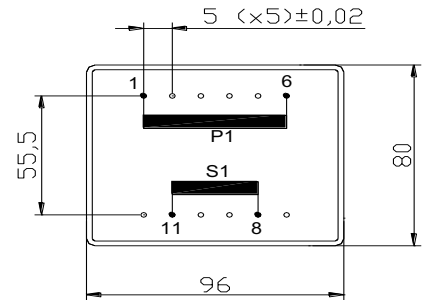
OPEN FRAME TRANSFORMERS

According EN61558, EN60590, EN60472, UL506, UL1585, UL5085 - External protection



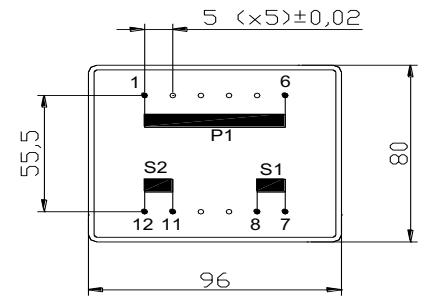
SINGLE SECONDARY, 185VA. Ta40°C

HR REFERENCE		Vo/Vsec=1,3 Vo → Is=0 Vsec → Isec=In		Prot. Prim. 230V: 50mA/T 115V: 100mA/T
Prim. 230V	Prim. 115V	Vsec	Isec	Prot. Sec. mA/F
C9650014	C9650114	4,5V	41111mA	42000mA
C9650000	C9650100	6V	30833mA	31000mA
C9650002	C9650102	7,5V	24667mA	25000mA
C9650004	C9650104	9V	20556mA	21000mA
C9650006	C9650106	12V	15417mA	16000mA
C9650008	C9650108	15V	12333mA	13000mA
C9650010	C9650110	18V	10278mA	11000mA
C9650020	C9650120	20V	9250mA	10000mA
C9650012	C9650112	24V	7708mA	8000mA



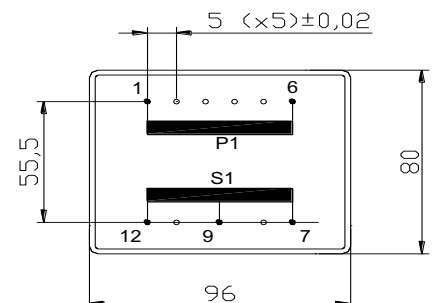
DUAL SECONDARY, 185VA. Ta40°C

HR REFERENCE		Vo/Vsec=1,3 Vo → Is=0 Vsec → Isec=In		Prot. Prim. 230V: 50mA/T 115V: 100mA/T
Prim. 230V	Prim. 115V	Vsec	Isec	Prot. Sec. mA/F
C9650015	C9650115	2x4,5V	2x20556mA	2x21000mA
C9650001	C9650101	2x6V	2x15417mA	2x16000mA
C9650003	C9650103	2x7,5V	2x12333mA	2x13000mA
C9650005	C9650105	2x9V	2x10278mA	2x11000mA
C9650007	C9650107	2x12V	2x7708mA	2x8000mA
C9650009	C9650109	2x15V	2x6167mA	2x7000mA
C9650011	C9650111	2x18V	2x5139mA	2x6000mA
C9650019	C9650119	2x20V	2x4625mA	2x5000mA
C9650013	C9650113	2x24V	2x3854mA	2x4000mA



CENTER TAPPED, 185VA. Ta40°C

HR REFERENCE		Vo/Vsec=1,3 Vo → Is=0 Vsec → Isec=In		Prot. Prim. 230V: 50mA/T 115V: 100mA/T
Prim. 230V	Prim. 115V	Vsec	Isec	Prot. Sec. mA/F
C9650035	C9650135	2x4,5V	2x20556mA	2x21000mA
C9650021	C9650121	2x6V	2x15417mA	2x16000mA
C9650023	C9650123	2x7,5V	2x12333mA	2x13000mA
C9650025	C9650125	2x9V	2x10278mA	2x11000mA
C9650027	C9650127	2x12V	2x7708mA	2x8000mA
C9650029	C9650129	2x15V	2x6167mA	2x7000mA
C9650031	C9650131	2x18V	2x5139mA	2x6000mA
C9650039	C9650139	2x20V	2x4625mA	2x5000mA
C9650033	C9650133	2x24V	2x3854mA	2x4000mA



According EN61558, EN60590, EN60472, UL506, UL1585, UL5085