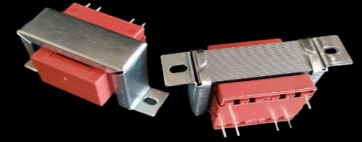




# C8450 (EI 84)

150VA - Ta40°B

Dim:70x84x97mm

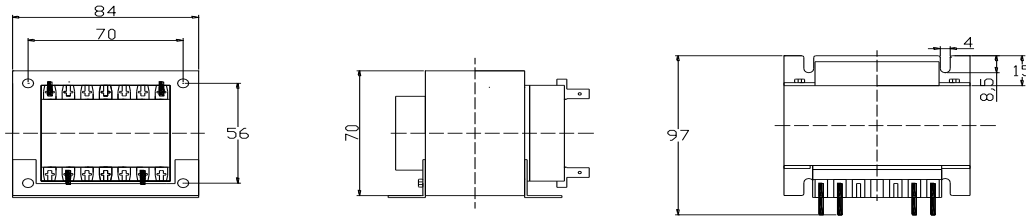


[www.efiter.com](http://www.efiter.com)

[home>>index](#)

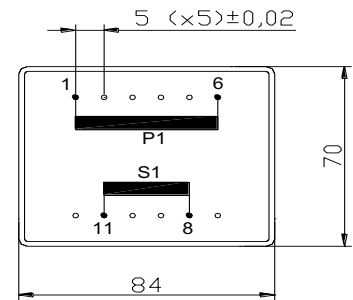
## OPEN FRAME TRANSFORMERS

According EN61558, EN60590, EN60472, UL506, UL1585, UL5085 · External protection



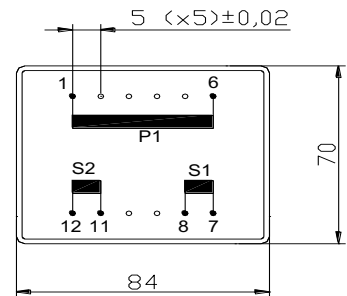
### SINGLE SECONDARY, 150VA. Ta40B

HR REFERENCE		Vo/Vsec=1,3 Vo → Is=0 Vsec → Isec=In		Prot. Prim. 230V: 50mA/T 115V: 100mA/T
Prim. 230V	Prim. 115V	Vsec	Isec	Prot. Sec. mA/F
C8450014	C8450114	4,5V	33333mA	35000mA
C8450000	C8450100	6V	25000mA	30000mA
C8450002	C8450102	7,5V	20000mA	21000mA
C8450004	C8450104	9V	16667mA	17000mA
C8450006	C8450106	12V	12500mA	15000mA
C8450008	C8450108	15V	10000mA	11000mA
C8450010	C8450110	18V	8333mA	10000mA
C8450020	C8450120	20V	7500mA	9000mA
C8450012	C8450112	24V	6250mA	7000mA



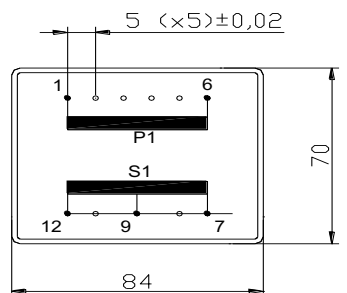
### DUAL SECONDARY, 150VA. Ta40B

HR REFERENCE		Vo/Vsec=1,3 Vo → Is=0 Vsec → Isec=In		Prot. Prim. 230V: 50mA/T 115V: 100mA/T
Prim. 230V	Prim. 115V	Vsec	Isec	Prot. Sec. mA/F
C8450015	C8450115	2x4,5V	2x16667mA	2x17000mA
C8450001	C8450101	2x6V	2x1250mA	2x1500mA
C8450003	C8450103	2x7,5V	2x10000mA	2x1100mA
C8450005	C8450105	2x9V	2x8333mA	2x1000mA
C8450007	C8450107	2x12V	2x6250mA	2x7000mA
C8450009	C8450109	2x15V	2x5000mA	2x6000mA
C8450011	C8450111	2x18V	2x4167mA	2x5000mA
C8450019	C8450119	2x20V	2x3750mA	2x4000mA
C8450013	C8450113	2x24V	2x3125mA	2x4000mA



### CENTER TAPPED, 150VA. Ta40B

HR REFERENCE		Vo/Vsec=1,3 Vo → Is=0 Vsec → Isec=In		Prot. Prim. 230V: 50mA/T 115V: 100mA/T
Prim. 230V	Prim. 115V	Vsec	Isec	Prot. Sec. mA/F
C8450035	C8450135	2x4,5V	2x16667mA	2x17000mA
C8450021	C8450121	2x6V	2x1250mA	2x1500mA
C8450023	C8450123	2x7,5V	2x10000mA	2x1100mA
C8450025	C8450125	2x9V	2x8333mA	2x1000mA
C8450027	C8450127	2x12V	2x6250mA	2x7000mA
C8450029	C8450129	2x15V	2x5000mA	2x6000mA
C8450031	C8450131	2x18V	2x4167mA	2x5000mA
C8450039	C8450139	2x20V	2x3750mA	2x4000mA
C8450033	C8450133	2x24V	2x3125mA	2x4000mA



According EN61558, EN60590, EN60472, UL506, UL1585, UL5085