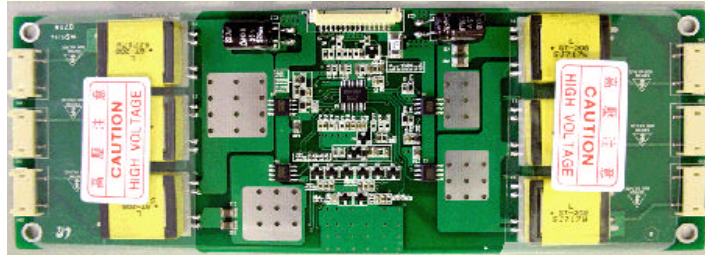


HR I06L10006



INVERTER ORIGINAL REFER. EQUIVAL. GH096A DA2605-01



Dimensiones / size : 188mm x 70mm

Conector Control / Control Connector														
15	14	13	12	11	10	9	8	7	6	5	4	3	2	1
12V	12V	12V	12V	12V	12V	GND	GND	N.C.	GND	GND	on-off	GND	Br.	GND

LCD panel manuf.	LCD Panel cod.
SHARP	LQ190E1LW41
FUJITSU	FLC48SXC8V-05 FLC48SXC8V-12 / F

Marca / Brand	Model
SHARP	

Observaciones / Remarks